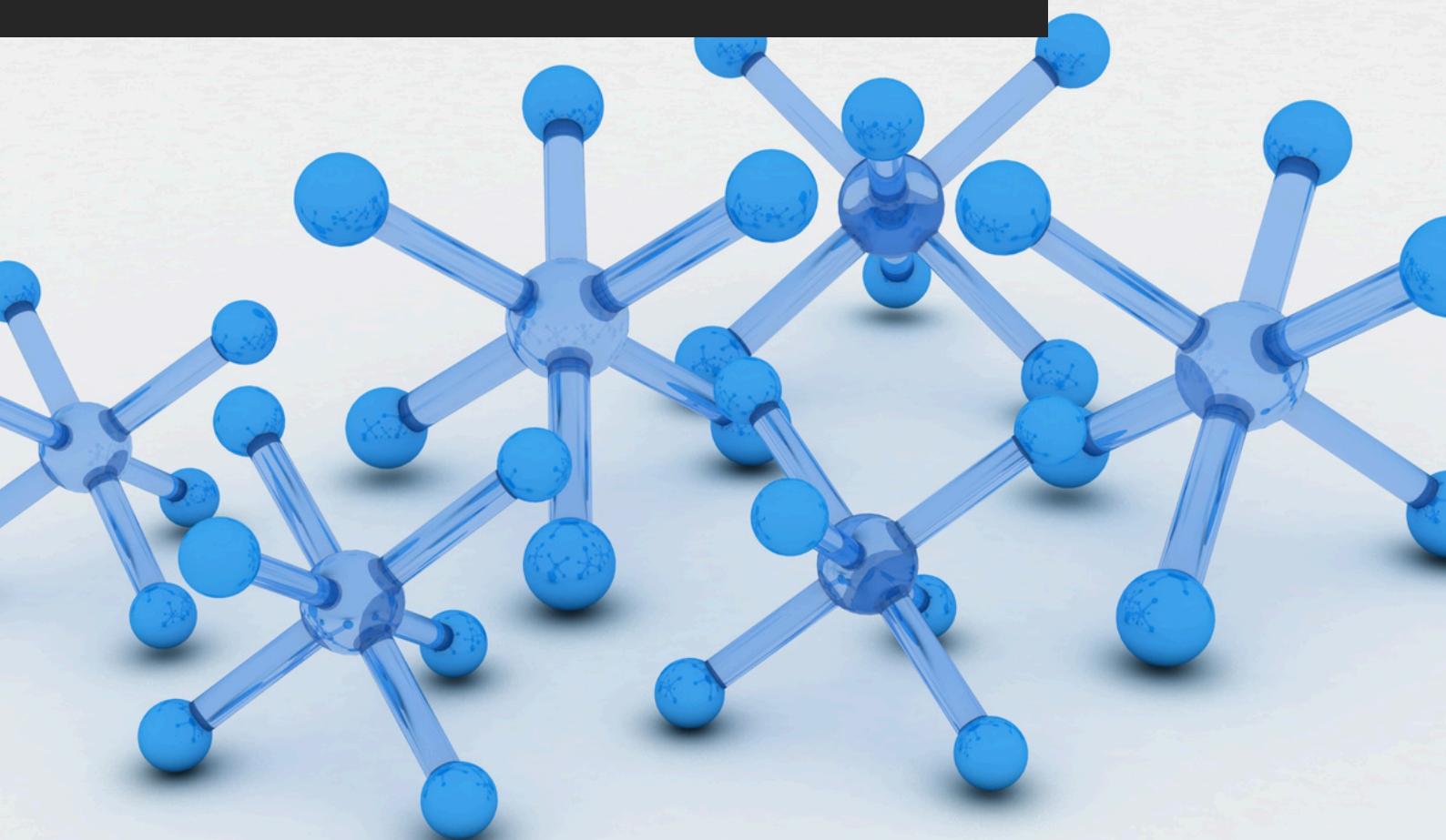


TDS_OPQV

OPAQUE VARNISH

TECHNICAL DATA SHEET
akteonpaints.com



Opaque Varnish_TDS_OPQV_2025_v1.0_EN

Visit our website and learn
more about our products
akteonpaints.com

For further information:
contact@akteonpaints.com

Kifissias Ave. 44,
Amarousion
+30 210 440 2727

OPAQUE VARNISH

ADVANCED ROTTED WOOD COATING WITH SURFACE REDEFINITION TECHNOLOGY

Main Features:

1. Single-component, ready-to-use repair coating.
2. Deep penetrating acrylic/modified polymer resin.
3. Reinforces and stabilizes decayed or fibrous wood fibers.
4. Forms a hard, sandable surface for refinishing.
5. Excellent adhesion to both sound and degraded wood.
6. Moisture-resistant film to prevent further decay.
7. UV-resistant protective layer for exterior use.
8. Easy application.

Applications:

1. Repair of rotted wood.
2. Restoration of door frames.
3. Treatment of weather-damaged decking ends.
4. Refurbishing outdoor wooden railings.
5. Conservation of historic wooden structures.
6. Repair of wooden furniture that had blackened.
7. Maintenance of wooden trims and claddings.
8. Base restoration before repainting or varnishing.

Technical Specifications & Typical Values

Binder Type	Acrylic
Colour	Opaque Base and P Base
Diluent	No dilution needed (Dilute with water by 20% only for spray gun use)
Density at 22°C (ISO 2811)	1.032 Kg/L
Solids %w/w	~ 50% *
VOC (2004/42/EC)	112 g/L – (A/i/SB) One-pack performance coatings - VOC compliant
Dry film thickness (2 coats) (ASTM D6132-13(2017))	70-84 µm
Hardness by Instrumented indentation (ISO 14577)	60-120 MPa

*depending on the tinting base

**depending on surface absorption, tinting base & application method

TECHNICAL DATA SHEET

OPAQUE VARNISH

ADVANCED ROTTED WOOD COATING WITH SURFACE REDEFINITION TECHNOLOGY

Technical Specifications & Typical Values

Method	Paint brush, roller, spray gun or floor-coating spatula
Coverage per coat	8-10 sqm/L**
Recoatability	24 h
Shelf life	12-24 months
Touch Dry Time at 22°C	20-30 min
Dry Through Time at 22°C	24 h
Ambient air temperature	min. +10°C / max. +40°C Expect considerable decrease in working times when temperature exceeds +35°C. (Might need to use extra nitro thinner) Consider the difference between substrate's temperature and ambient air temperature.
Relative air humidity	20 % min. / 55-60 % max.
Dew point	Substrate's temperature must be at least 3°C above the dew point to reduce the risk of condensation.
Substrate moisture content	< 20 %
Curing time	Note: Times are approximate and will be affected by changing ambient and substrate conditions, particularly temperature and relative humidity.
Foot traffic	~ 24 h ****
Light mechanical loading	5-7 days
Fully serviceable	7-12 days ****

*Depending on the tinting base

**Depending on surface absorption, tinting base & application method

***Drying times are temperature, humidity, and film thickness dependent

****For the purposes of this technical data sheet, "foot traffic" refers exclusively to light foot traffic, meaning stepping or walking without dragging, rolling, or moving heavy objects. This does not include activities that may exert excessive pressure or cause mechanical damage to the coating during its polymerization process of 7-12 days. To prevent potential damage, avoid placing or moving furniture, equipment, or other heavy items on the surface until the coating has fully cured as specified in the curing guidelines.

OPAQUE VARNISH

ADVANCED ROTTED WOOD COATING WITH SURFACE REDEFINITION TECHNOLOGY

OPAQUE VARNISH preparation:

Substrate quality & preparation:

- The substrate must be cured, solid, clean, dry and free of all contaminants such as dust, dirt, oil, grease, surface treatments, etc.
- Surface defects such as cracks, blow holes, and voids must be fully exposed and repaired.
- Uneven substrate should be leveled to produce a roughened flat surface.

OPAQUE VARNISH preparation:

In the case of spray gun application, dilute Opaque Varnish with water by 10%

Apply 2 coats with 24h intervals.

Important application remarks:

- Untreated substrate defects could lead to reflective coating defects and reduced performance.
- The substrate's moisture should be less than 20% to avoid coating adhesion failure and film defects. Higher substrate moisture could result in a lack of coating adhesion and/or blooming.
- Tool cleaning right after use with water, always following the local HSE rules.

Packaging:

Metal can of 0.75-L / 2.5-L / 10-L

Storage:

Shelf life: 12-24 months from the date of production, in original unopened packaging in a cool and dry condition between +5°C and +35°C. Protect from direct sunlight, heat, temperature extremes, and moisture. Failure to comply with the recommended storage conditions may result in premature deterioration of the product packaging and which may cause inconsistent workability, finish, and cure times of the material.

Health, Safety & Environment:

Read the product label carefully before use. The Technical Data Sheet should be read in conjunction with the Safety Data Sheet.

TECHNICAL DATA SHEET

OPAQUE VARNISH

ADVANCED ROTTED WOOD COATING WITH SURFACE REDEFINITION TECHNOLOGY

Paint System

Contact Akteon Paints for case-by-case recommendations at: contact@akteonpaints.com or visit www.akteonpaints.com

Disclaimer: The information contained in this publication is based on our scientific knowledge, laboratory studies and long-term experience. Therefore, the information provided must be considered indicative and subject to constant review in relation to the circumstances and each practical application. This information is for use by technically skilled persons at their own discretion and risk. The user alone has the responsibility to ensure that existing laws and legislation are observed when using the products.