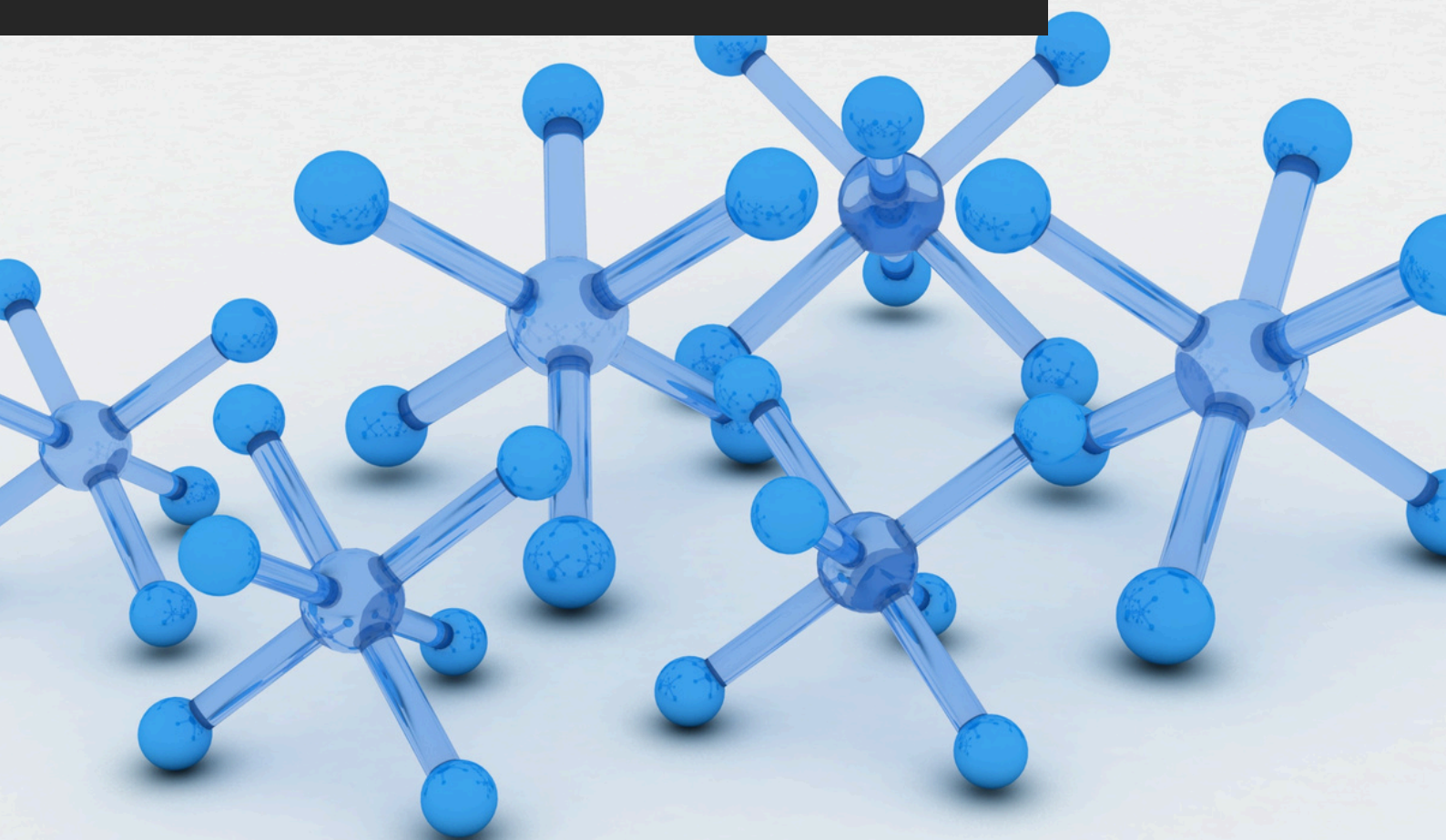


TDS_75H

AKTEONTOP PU-TERRA HYBRID

TECHNICAL DATA SHEET
akteonpaints.com



Akteontop_PU_Terra_Hybrid_TDS_75H_2025_v1.0_EN

Visit our website and learn
more about our products
akteonpaints.com

For further information:
contact@akteonpaints.com

Kifissias Ave. 44,
Amarousion
+30 210 440 2727

TECHNICAL DATA SHEET

AKTEONTOP PU-TERRA

Water-based, advanced-technology enamel paint suitable for all surfaces.

Main Features:

1. Water-based hybrid polyurethane enamel paint
2. Superior adhesion on surfaces with poor adhesion
3. High resistance to chemical cleaners
4. Excellent abrasion resistance
5. Durable against mechanical wear
6. Suitable for recoating existing surfaces
7. Easy application with brush, roller, or spray
8. Low odor and environmentally friendly formulation
9. Provides a long-lasting protective and decorative finish.

Applications:

1. Doors.
2. Kitchen cabinets.
3. Tiles.
4. Marble and mosaic surfaces.
5. Galvanized surfaces.
6. Copper surfaces.
7. Plastic.
8. Melamine panels.
9. Aluminum and other metal surfaces.
10. Already painted surfaces.

Technical Specifications & Typical Values

Binder Type	Hybrid: Polyurethane (PU) - Acrylic
Colour	Available in bases: P, D & TR for tinting in any shade by using color-tinting machines.
Diluent	Water
Density at 22°C (ISO 2811)	1.22 Kg/L
Solids %w/w	~ 62% *
VOC (2004/42/EC)	115 g/L – (A/i/SB) One-pack performance coatings - VOC compliant
Dry film thickness (2 coats) (ASTM D6132-13(2017))	78 µm
Hardness by Instrumented indentation (ISO 14577)	158 MPa

*depending on the tinting base

**depending on surface absorption, tinting base & application method

AKTEONTOP PU-TERRA

Water-based, advanced-technology enamel paint suitable for all surfaces.

Technical Specifications & Typical Values

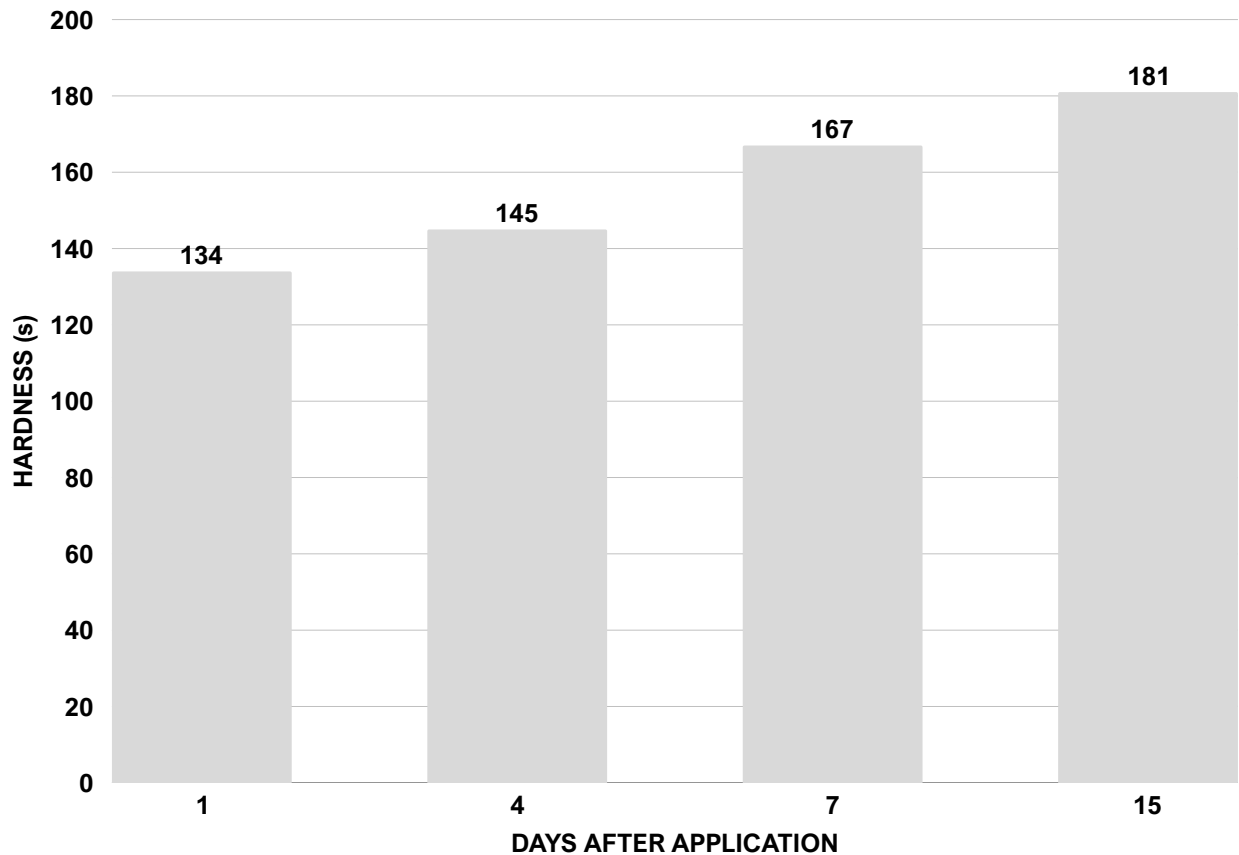
Method	Paint brush, roller or spray gun
Coverage per coat	10-12 sqm/L**
Recoatability	6-8 h
Shelf life	12-24 months
Touch Dry Time at 22°C	60 min
Dry Through Time at 22°C	24 h
Ambient air temperature	min. +10°C / max. +40°C
Relative air humidity	20 % min. / 55-60 % max.
Curing time	Note: Times are approximate and will be affected by changing ambient and substrate conditions, particularly temperature and relative humidity.
Fully Polymerized	7 days

*Depending on the tinting base

**Depending on surface absorption, tinting base & application method

***Drying times are temperature, humidity, and film thickness dependent

Persoz Hardness



AKTEONTOP PU-TERRA

Water-based, advanced-technology enamel paint suitable for all surfaces.

AKTEONTOP PU-TERRA preparation:

Substrate quality & preparation:

1. The substrate must be cured, solid, clean, dry and free of all contaminants such as dust, dirt, oil, grease, surface treatments, etc.
2. Surface defects such as cracks, blow holes, and voids must be fully exposed and repaired.
3. Uneven substrate should be leveled to produce a roughened flat surface.

AKTEONTOP PU-TERRA preparation:

While using brush or roller dilute with water by 10% for **first layer** and 10% for **second layer**

Important application remarks:

1. Untreated substrate defects could lead to reflective coating defects and reduced performance.
2. For tool cleaning right after use water and soap, always following the local HSE rules.

Packaging:

Metal can of:

0.75-L

2.5-L

10-L

Storage:

Shelf life: 12-24 months from the date of production, in original unopened packaging in a cool and dry condition between +5°C and +35°C. Protect from direct sunlight, heat, temperature extremes, and moisture. Failure to comply with the recommended storage conditions may result in premature deterioration of the product packaging and which may cause inconsistent workability, finish and cure times of the material.

Health, Safety & Environment:

Read the product label carefully before use. The Technical Data Sheet should be read in conjunction with the Safety Data Sheet.

TECHNICAL DATA SHEET

AKTEONTOP PU-TERRA

Water-based, advanced-technology enamel paint suitable for all surfaces.

Paint System

Contact Akteon Paints for case-by-case recommendations at: contact@akteonpaints.com or visit www.akteonpaints.com

Disclaimer: The information contained in this publication is based on our scientific knowledge, laboratory studies and long-term experience. Therefore, the information provided must be considered indicative and subject to constant review in relation to the circumstances and each practical application. This information is for use by technically skilled persons at their own discretion and risk. The user alone has the responsibility to ensure that existing laws and legislation are observed when using the products.