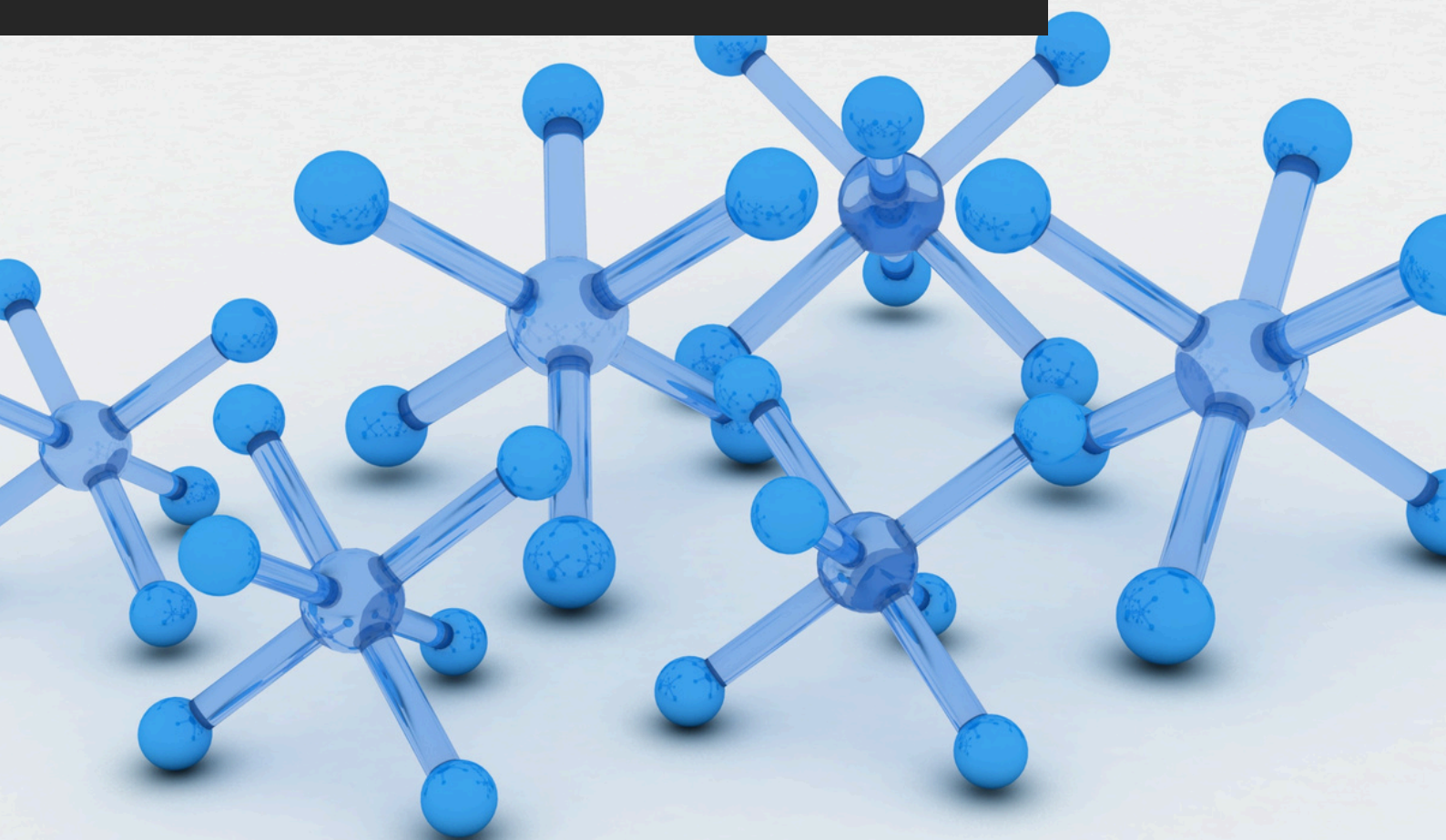


TDS_5050

AGP 5050

TECHNICAL DATA SHEET
akteonpaints.com



AGP_5050_TDS_5050_2026_v1.0_EN

Visit our website and learn
more about our products
akteonpaints.com

For further information:
contact@akteonpaints.com

Kifissias Ave. 44,
Amarousion
+30 210 440 2727

TECHNICAL DATA SHEET

AGP 5050

Water-based, hybrid polyurethane waterproofer.

Main Features:

1. Water-based hybrid polyurethane formulation.
2. High elasticity to accommodate thermal expansion and contraction.
3. Excellent waterproofing and surface sealing performance.
4. Strong resistance to ultraviolet (UV) radiation and weathering.
5. Can be used alone or as part of a double protection system.
6. Compatible with solvent-based waterproofing systems.

Applications:

1. Flat roofs and terraces exposed to weather conditions.
2. Concrete and cementitious surfaces.
3. Recoating and refurbishment of existing waterproofing systems.
4. Balconies and external walkways.
5. Surfaces subject to thermal expansion and contraction.
6. Protective coating over polyurethane waterproofing systems.
7. Sealing of porous substrates.

Technical Specifications & Typical Values

Binder Type	Hybrid: Polyurethane (PU) - Acrylic
Colour	Available White, Terracotta, Grey, Beige, TR Base and other colours upon request.
Thinner	Water
Density at 22°C (ISO 2811)	1.21 Kg/L
Solids %w/w	~ 49-51 % *
VOC (2004/42/EC)	42 g/L – (A/i/SB) One-pack performance coatings - VOC compliant
Dry film thickness (2 coats) (ASTM D6132-13(2017))	220 µm

*depending on the tinting base

**depending on surface absorption, tinting base & application method

TECHNICAL DATA SHEET

AGP 5050

Water-based, hybrid polyurethane waterproofer.

Technical Specifications & Typical Values

Method	Paint brush, roller, spray gun or floor-coating spatula
Coverage per two coats	1,2 sqm/L**
Recoatibility	24-48 h
Shelf life	12-24 months
Touch Dry Time at 22°C	4 hours
Dry Through Time at 22°C	24 h
Ambient air temperature	min. +5°C / max. +40°C
Curing time	Note: Times are approximate and will be affected by changing ambient and substrate conditions, particularly temperature and relative humidity.
Full regular use	3-7 days

*Depending on the tinting base

**Depending on surface absorption, tinting base & application method

***Drying times are temperature, humidity, and film thickness dependent

TECHNICAL DATA SHEET

AGP 5050

Water-based, hybrid polyurethane waterproofer.

AGP 5050 preparation:

Substrate quality & preparation:

1. The substrate must be cured, solid, clean, dry and free of all contaminants such as dust, dirt, oil, grease, surface treatments, etc.
2. Surface defects such as cracks, blow holes, and voids must be fully exposed and repaired.
3. Uneven substrate should be leveled to produce a roughened flat surface.

Apply 2 coats of AGP 5050 with 24-48 h intervals:

- Apply AGP 5050 diluted (maximum) with water by 5-10 % for first layer.
- After 24-48 h apply second layer of AGP 5050 diluted with water by 5-10% (maximum).

Important application remarks:

1. Untreated substrate defects could lead to reflective coating defects and reduced performance.
2. Tool cleaning right after use with soap and water, always following the local HSE rules.

Packaging:

Metal can of **0.75-L / 2.5-L / 10-L / 20-L**

Storage:

Shelf life: 12-24 months from the date of production, in original unopened packaging in a cool and dry condition between +5°C and +35°C. Protect from direct sunlight, heat, temperature extremes, and moisture. Failure to comply with the recommended storage conditions may result in premature deterioration of the product packaging and which may cause inconsistent workability, finish and cure times of the material.

Health, Safety & Environment:

Read the product label carefully before use. The Technical Data Sheet should be read in conjunction with the Safety Data Sheet.

TECHNICAL DATA SHEET

AGP 5050

Water-based, hybrid polyurethane waterproofer.

Paint System

Contact Akteon Paints for case-by-case recommendations at: contact@akteonpaints.com or visit www.akteonpaints.com

Disclaimer: The information contained in this publication is based on our scientific knowledge, laboratory studies and long-term experience. Therefore, the information provided must be considered indicative and subject to constant review in relation to the circumstances and each practical application. This information is for use by technically skilled persons at their own discretion and risk. The user alone has the responsibility to ensure that existing laws and legislation are observed when using the products.