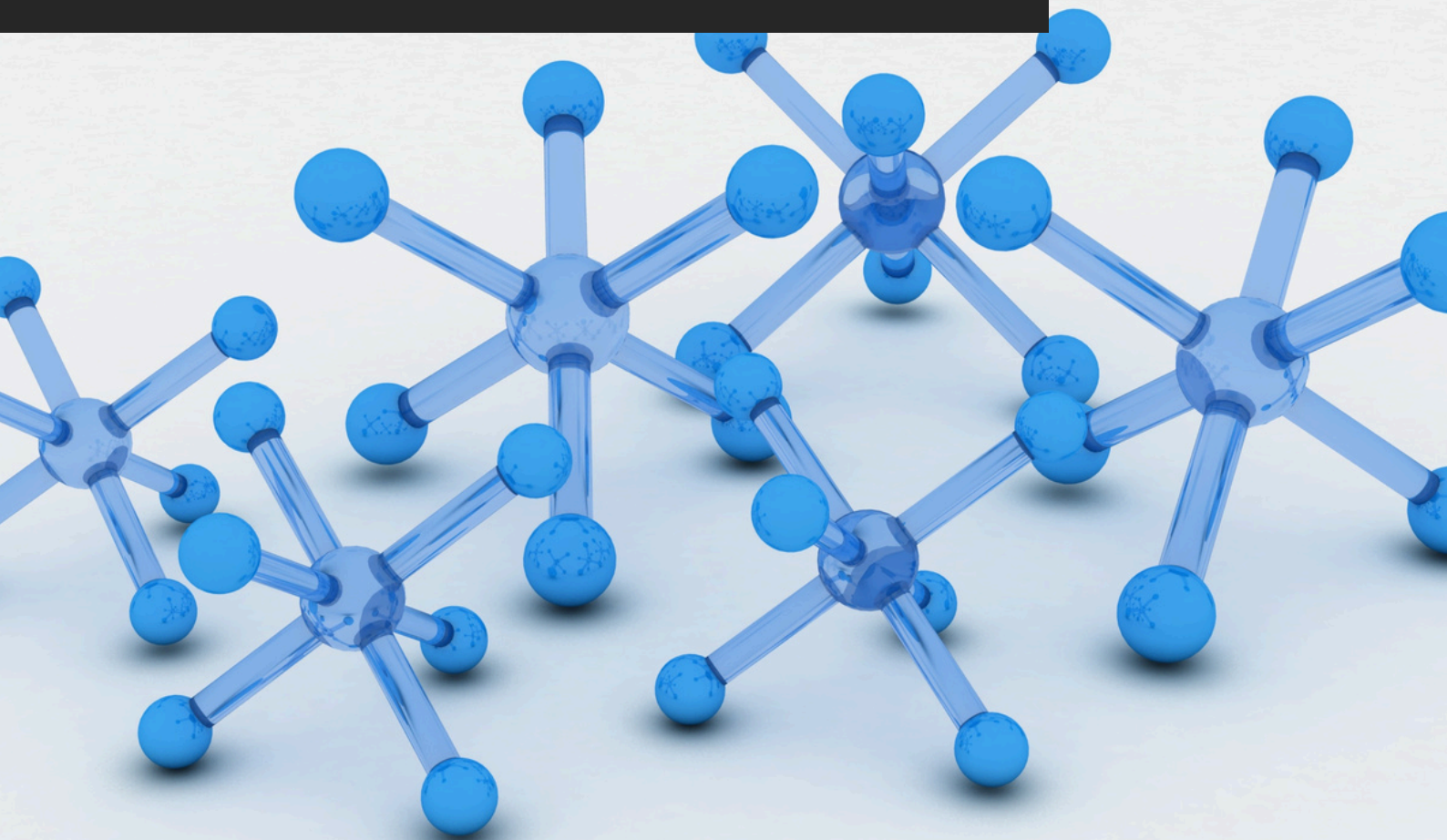


TDS_707

E-FLOOR WATERBASED

TECHNICAL DATA SHEET
akteonpaints.com



E-Floor_Waterbased_TDS_707_2026_v1.0_EN

Visit our website and learn
more about our products
akteonpaints.com

For further information:
contact@akteonpaints.com

Kifissias Ave. 44,
Amarousion
+30 210 440 2727

E-FLOOR WATERBASED

One-component, water based floor coating.

Main Features:

1. One-component water-based formulation for easy application
2. High resistance to daily wear, abrasion, and stress
3. Can be applied directly on cementitious surfaces or screeds
4. Compatible with primers for porous or weak substrates
5. Quick surface drying (40-60 minutes) and fast full curing (2-4 hours)
6. Tintable to any color shade via coloring machines

Applications:

1. Exterior concrete and cement floors
2. Industrial and commercial flooring
3. Floor markings for safety and organization
4. Cement screed and structural surfaces
5. Ceramic and tile surfaces
6. Surface waterproofing treatments
7. Hardening and protective treatment of cementitious substrates
8. Stamped or decorative concrete floors
9. High-traffic pedestrian areas

Technical Specifications & Typical Values

Binder Type	Hybrid: Polyurethane (PU) - Acrylic
Colour	Available in bases: P, D & TR for tinting in any shade by using color-tinting machines.
Diluent	Water
Density at 22°C (ISO 2811)	1.18 Kg/L
Solids %w/w	~ 58% *
VOC (2004/42/EC)	113 g/L – (A/i/SB) One-pack performance coatings - VOC compliant
Dry film thickness (2 coats) (ASTM D6132-13(2017))	81 µm
Hardness by Instrumented indentation (ISO 14577)	157 MPa

*depending on the tinting base

**depending on surface absorption, tinting base & application method

E-FLOOR WATERBASED

One-component, water based floor coating.

Technical Specifications & Typical Values

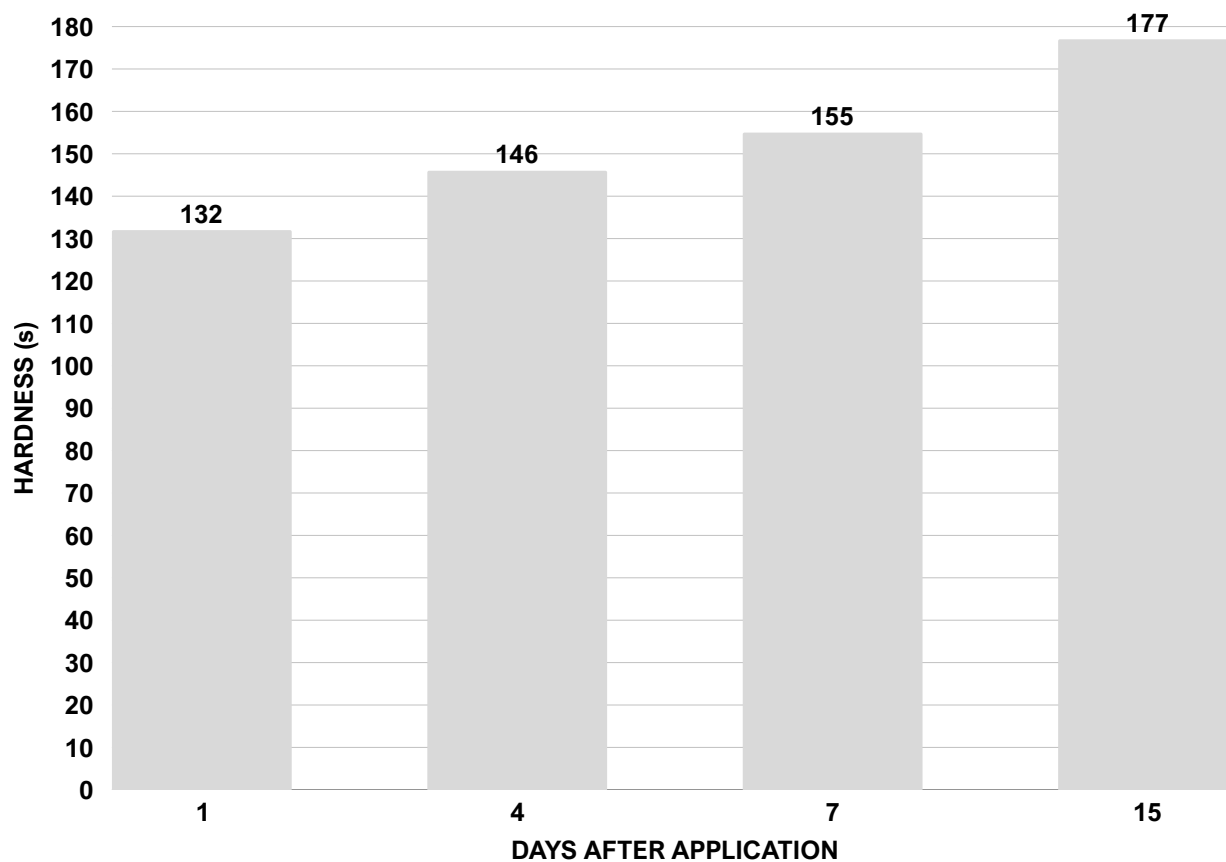
Method	Paint brush, roller or spray gun
Coverage per coat	8-10 sqm/L**
Recoatibility	6-8 h
Shelf life	12-24 months
Touch Dry Time at 22°C	1-2 hours
Dry Through Time at 22°C	24 h
Ambient air temperature	min. +10°C / max. +40°C
Relative air humidity	20 % min. / 55-60 % max.
Curing time	Note: Times are approximate and will be affected by changing ambient and substrate conditions, particularly temperature and relative humidity.
Fully Polymerized	7 days

*Depending on the tinting base

**Depending on surface absorption, tinting base & application method

***Drying times are temperature, humidity, and film thickness dependent

Persoz Hardness



E-FLOOR WATERBASED

One-component, water based floor coating.

E-FLOOR WATERBASED preparation:

Substrate quality & preparation:

1. The substrate must be cured, solid, clean, dry and free of all contaminants such as dust, dirt, oil, grease, surface treatments, etc.
2. Surface defects such as cracks, blow holes, and voids must be fully exposed and repaired.
3. Uneven substrate should be leveled to produce a roughened flat surface.

E-FLOOR WATERBASED preparation:

While using brush or roller dilute with water by 25% for **first layer** and 10% for **second layer**

In the case of spray gun application, dilute with water by 20%

Important application remarks:

1. Untreated substrate defects could lead to reflective coating defects and reduced performance.
2. For tool cleaning right after use water and soap, always following the local HSE rules.

Packaging:

Metal can of:

0.75-L

2.5-L

10-L

Storage:

Shelf life: 12-24 months from the date of production, in original unopened packaging in a cool and dry condition between +5°C and +35°C. Protect from direct sunlight, heat, temperature extremes, and moisture. Failure to comply with the recommended storage conditions may result in premature deterioration of the product packaging and which may cause inconsistent workability, finish and cure times of the material.

Health, Safety & Environment:

Read the product label carefully before use. The Technical Data Sheet should be read in conjunction with the Safety Data Sheet.

E-FLOOR WATERBASED

One-component, water based floor coating.

Paint System

Contact Akteon Paints for case-by-case recommendations at: contact@akteonpaints.com or visit www.akteonpaints.com

Disclaimer: The information contained in this publication is based on our scientific knowledge, laboratory studies and long-term experience. Therefore, the information provided must be considered indicative and subject to constant review in relation to the circumstances and each practical application. This information is for use by technically skilled persons at their own discretion and risk. The user alone has the responsibility to ensure that existing laws and legislation are observed when using the products.