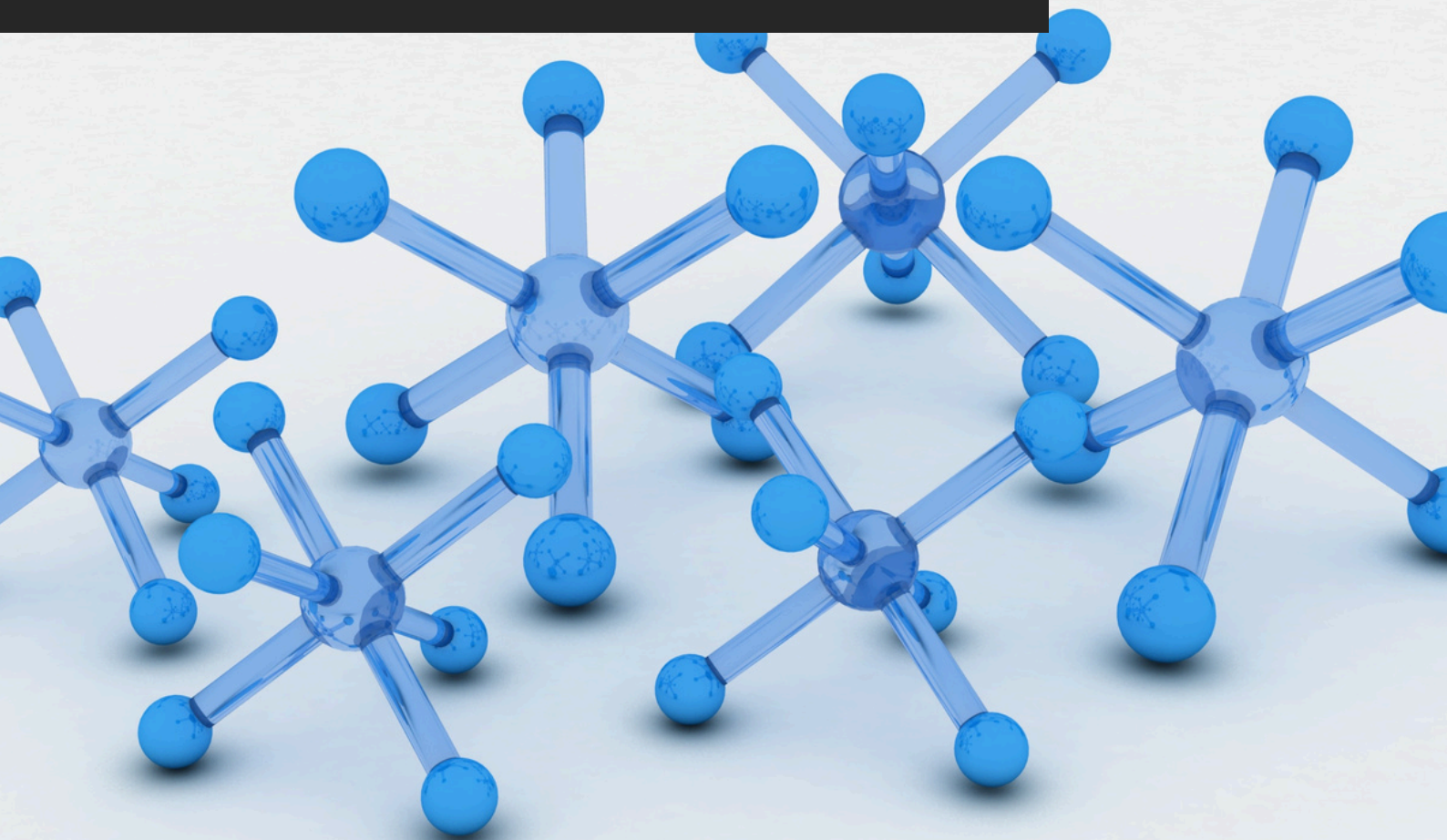


TDS_500

ANTIRAIN PU-TERRA HYBRID

TECHNICAL DATA SHEET
akteonpaints.com



Antirain Pu-Terra Hybrid_TDS_500_2025_v1.0_EN

Visit our website and learn
more about our products
akteonpaints.com

For further information:
contact@akteonpaints.com

Kifissias Ave. 44,
Amarousion
+30 210 440 2727

ANTIRAIN PU-TERRA HYBRID

High-tech acrylic waterproofing agent with addition of hybrid polyurethane.

Main Features:

1. Hybrid composition combining acrylic resin with added polyurethane for enhanced performance.
2. High elasticity ensuring crack-bridging capability and flexibility under temperature changes.
3. Strong adhesion.
4. Excellent waterproofing barrier against rain, moisture, and environmental humidity.
5. Increased durability due to polyurethane reinforcement—improved abrasion and weather resistance.
6. Breathable coating allowing vapor release while keeping water out.

Applications:

1. Waterproof coating for roofs.
2. Crack-bridging membrane on hairline cracks.
3. Protection of exterior building elements exposed to water and sunlight.
4. Waterproofing around chimneys, ducts, and roof joints.
5. Moisture protection for bathrooms and wet areas (non-immersed).
6. General building maintenance and renovation waterproofing.

Technical Specifications & Typical Values

Binder Type	Acrylic
Colour	Available White, Terracotta, Grey and other colours upon request.
Thinner	Water
Density at 22°C (ISO 2811)	1.24 Kg/L
Solids %w/w	~ 62% *
VOC (2004/42/EC)	37 g/L – (A/i/SB) One-pack performance coatings - VOC compliant
Dry film thickness (2 coats) (ASTM D6132-13(2017))	380 µm

*depending on the tinting base

**depending on surface absorption, tinting base & application method

ANTIRAIN PU-TERRA HYBRID

High-tech acrylic waterproofing agent with addition of hybrid polyurethane.

Technical Specifications & Typical Values

Method	Paint brush, roller, spray gun or floor-coating spatula
Coverage per two coats	1,2 sqm/L**
Recoatibility	24-48 h
Shelf life	12-24 months
Touch Dry Time at 22°C	4 hours
Dry Through Time at 22°C	24 h
Ambient air temperature	min. +5°C / max. +40°C
Curing time	Note: Times are approximate and will be affected by changing ambient and substrate conditions, particularly temperature and relative humidity.
Full regular use	3-7 days

*Depending on the tinting base

**Depending on surface absorption, tinting base & application method

***Drying times are temperature, humidity, and film thickness dependent

ANTIRAIN PU-TERRA HYBRID

High-tech acrylic waterproofing agent with addition of hybrid polyurethane.

ANTIRAIN PU-TERRA HYBRID preparation:

Substrate quality & preparation:

1. The substrate must be cured, solid, clean, dry and free of all contaminants such as dust, dirt, oil, grease, surface treatments, etc.
2. Surface defects such as cracks, blow holes, and voids must be fully exposed and repaired.
3. Uneven substrate should be leveled to produce a roughened flat surface.

Apply 2 coats of Antirain with 24-48 h intervals:

- Apply Antirain diluted with water by 10-20 % for first layer.
- After 24-48 h apply second layer of Antirain diluted with water by 0-10%.

Important application remarks:

1. Untreated substrate defects could lead to reflective coating defects and reduced performance.
2. Tool cleaning right after use with soap and water, always following the local HSE rules.

Packaging:

Metal can of **0.75-L / 2.5-L / 10-L / 20-L**

Storage:

Shelf life: 12-24 months from the date of production, in original unopened packaging in a cool and dry condition between +5°C and +35°C. Protect from direct sunlight, heat, temperature extremes, and moisture. Failure to comply with the recommended storage conditions may result in premature deterioration of the product packaging and which may cause inconsistent workability, finish and cure times of the material.

Health, Safety & Environment:

Read the product label carefully before use. The Technical Data Sheet should be read in conjunction with the Safety Data Sheet.

ANTIRAIN PU-TERRA HYBRID

High-tech acrylic waterproofing agent with addition of hybrid polyurethane.

Paint System

Contact Akteon Paints for case-by-case recommendations at: contact@akteonpaints.com or visit www.akteonpaints.com

Disclaimer: The information contained in this publication is based on our scientific knowledge, laboratory studies and long-term experience. Therefore, the information provided must be considered indicative and subject to constant review in relation to the circumstances and each practical application. This information is for use by technically skilled persons at their own discretion and risk. The user alone has the responsibility to ensure that existing laws and legislation are observed when using the products.