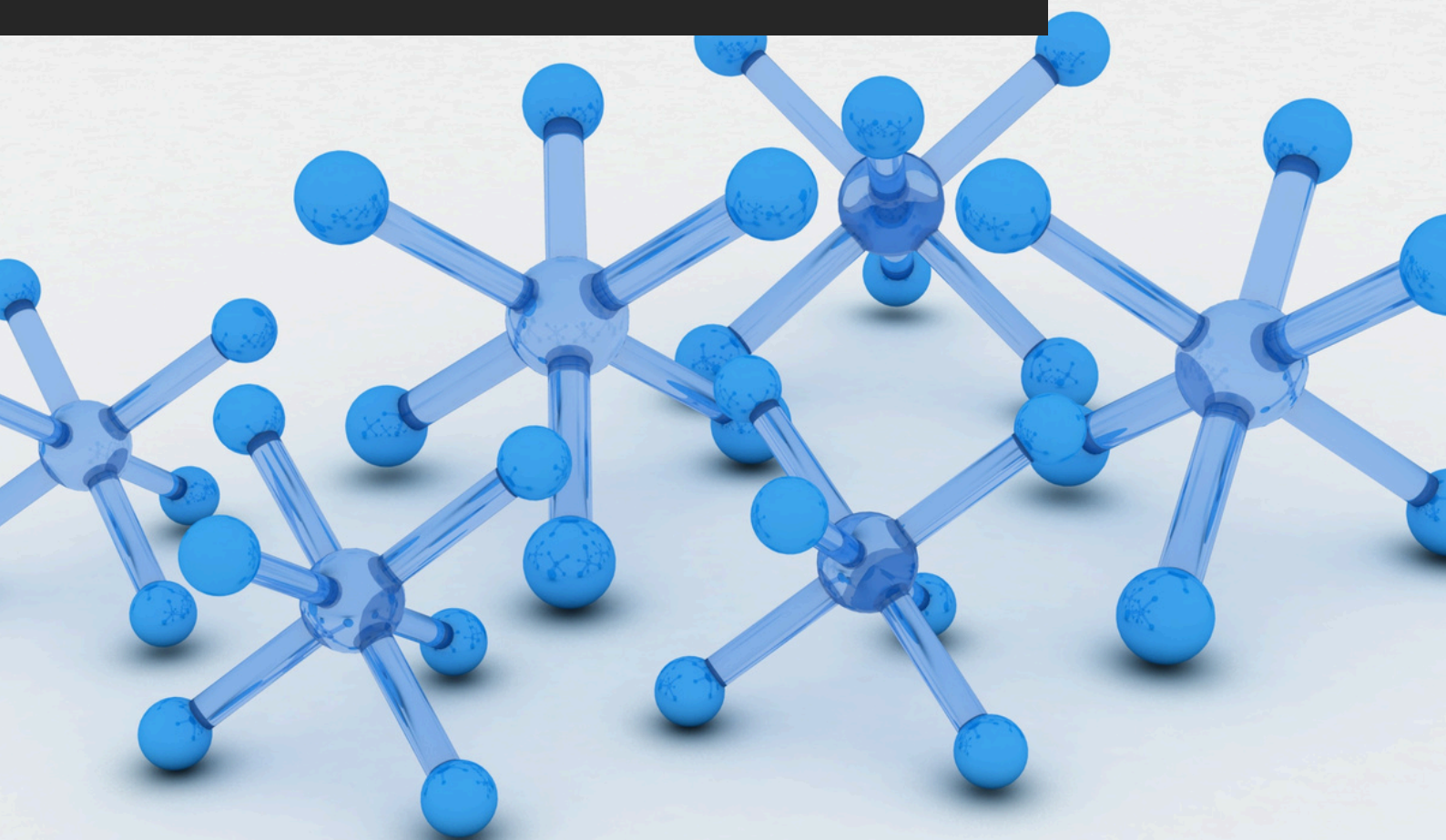


TDS_6051

STAN MARINE VARNISH

TECHNICAL DATA SHEET
akteonpaints.com



Stan Marine Varnish_TDS_6051_2025_v1.0_EN

Visit our website and learn
more about our products
akteonpaints.com

For further information:
contact@akteonpaints.com

Kifissias Ave. 44,
Amarousion
+30 210 440 2727

STAN MARINE VARNISH

High-strength marine varnish.

Main Features:

1. High-quality solvent-based marine varnish engineered for the harshest environments.
2. 43% elasticity allows the film to expand and contract with wood without cracking.
3. Superior protection against saltwater, humidity, and marine air.
4. High-build, crust-forming varnish providing a thick, durable protective film.
5. Strong resistance to abrasion, impact, and mechanical wear.
6. Smooth leveling for a high-gloss or satin premium marine finish (depending on formulation).

Applications:

1. Marine woodwork: railings, trims, masts, handrails, and decorative elements (above waterline).
2. Coastal-area wooden structures exposed to extreme humidity and UV.
3. Exterior doors, shutters, windows, beams, pergolas, and outdoor furniture.
4. Wooden boats, yachts, and marine craft (interior & exterior components).
5. Jetty and marina structures made of hardwood or softwood.

Technical Specifications & Typical Values

Binder Type	Alkyd
Colour	Available in Clear (Varnish) state and 14 Natural Shades .
Thinner	White Spirit
Density at 22°C (ISO 2811)	0.97 Kg/L
Solids %w/w	~ 62 % *
VOC (2004/42/EC)	490 g/L – (A/i/SB) One-pack performance coatings - VOC compliant
Dry film thickness (2 coats) (ASTM D6132-13(2017))	98 µm

*depending on the tinting base

**depending on surface absorption, tinting base & application method

STAN MARINE VARNISH

High-strength marine varnish.

Technical Specifications & Typical Values

Method	Paint brush, roller or spray gun
Coverage per coat	8-10 sqm/L**
Recoatability	24 hours
Shelf life	12-24 months
Touch Dry Time at 22°C	2-3 hours
Dry Through Time at 22°C	12-24 hours
Ambient air temperature	min. +10°C / max. +40°C
Relative air humidity	55-60 % max.
Substrate moisture content	< 15%
Curing time	Note: Times are approximate and will be affected by changing ambient and substrate conditions, particularly temperature and relative humidity.
Foot traffic	~ 12-24 h ****
Light mechanical loading	3-5 days
Fully serviceable	7-12 days ****

*Depending on the tinting base

**Depending on surface absorption, tinting base & application method

***Drying times are temperature, humidity, and film thickness dependent

****For the purposes of this technical data sheet, "foot traffic" refers exclusively to light foot traffic, meaning stepping or walking without dragging, rolling, or moving heavy objects. This does not include activities that may exert excessive pressure or cause mechanical damage to the coating during its polymerization process of 7-12 days. To prevent potential damage, avoid placing or moving furniture, equipment, or other heavy items on the surface until the coating has fully cured as specified in the curing guidelines.

STAN MARINE VARNISH

High-strength marine varnish.

STAN MARINE preparation:

Substrate quality & preparation:

1. The substrate must be cured, solid, clean, dry and free of all contaminants such as dust, dirt, oil, grease, surface treatments, etc.
2. Surface defects such as cracks, blow holes, and voids must be fully exposed and repaired.
3. Uneven substrate should be leveled to produce a roughened flat surface.

STAN MARINE preparation:

In the case of spray gun application, dilute by 20% with white spirit.

Important application remarks:

1. Untreated substrate defects could lead to reflective coating defects and reduced performance.
2. Substrate washing is not allowed before the application of solvent-based coatings.
3. Tool cleaning right after use with white spirit (or soap and water), always following the local HSE rules.

Packaging:

Metal can of:

0.75-L

2.5-L

10-L

Storage:

Shelf life: 12-24 months from the date of production, in original unopened packaging in a cool and dry condition between +5°C and +35°C. Protect from direct sunlight, heat, temperature extremes, and moisture. Failure to comply with the recommended storage conditions may result in premature deterioration of the product packaging and which may cause inconsistent workability, finish and cure times of the material.

Health, Safety & Environment:

Read the product label carefully before use. The Technical Data Sheet should be read in conjunction with the Safety Data Sheet.

TECHNICAL DATA SHEET

STAN MARINE VARNISH

High-strength marine varnish.

Paint System

Contact Akteon Paints for case-by-case recommendations at: contact@akteonpaints.com or visit www.akteonpaints.com

Disclaimer: The information contained in this publication is based on our scientific knowledge, laboratory studies and long-term experience. Therefore, the information provided must be considered indicative and subject to constant review in relation to the circumstances and each practical application. This information is for use by technically skilled persons at their own discretion and risk. The user alone has the responsibility to ensure that existing laws and legislation are observed when using the products.