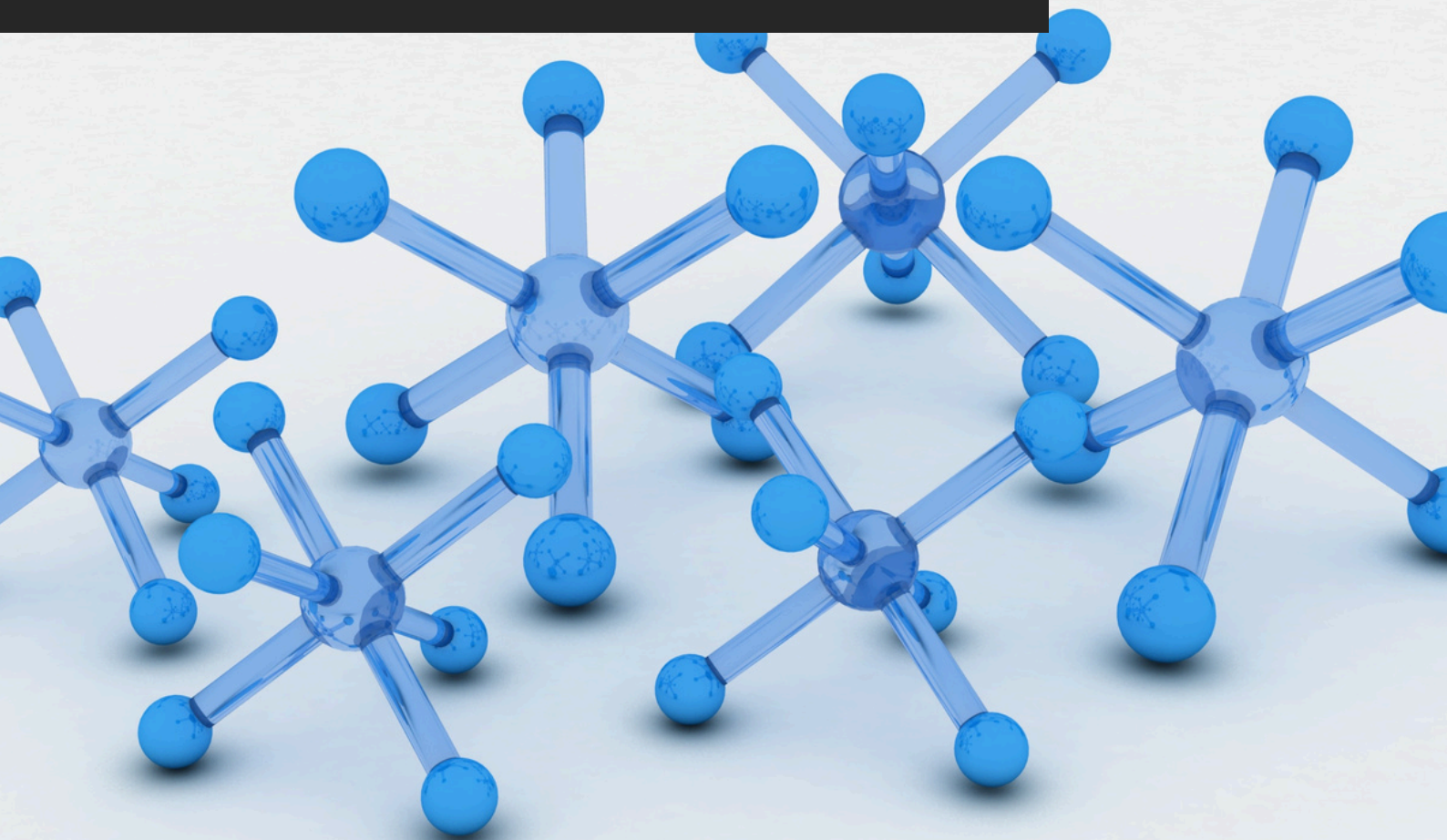


# TDS\_98 ANTI-CORROSIVE

Technical Data Sheet  
[akteonpaints.com](http://akteonpaints.com)



Anti-Corrosive\_TDS\_98\_2025\_v1.0\_EN

Visit our website and learn  
more about our products  
[akteonpaints.com](http://akteonpaints.com)

For further information:  
[contact@akteonpaints.com](mailto:contact@akteonpaints.com)

Kifissias Ave. 44,  
Amarousion  
+30 210 440 2727

## TECHNICAL DATA SHEET

# ANTI-CORROSIVE

Triple action anti-corrosion agent for metal surfaces.

### Main Features:

1. Triple-action formula: rust prevention, corrosion inhibition, and surface stabilization.
2. Creates a strong protective base layer that prolongs metal lifespan.
3. Prevents rust formation by blocking oxygen and moisture penetration.
4. Excellent adhesion on ferrous metals and lightly rusted surfaces.
5. Converts unstable oxidized areas into a more stable substrate (depending on formulation).

### Applications:

1. Structural steel, iron railings, fences, and gates.
2. Metal machinery, tools, industrial equipment, and components.
3. Metal doors, shutters, frames, and architectural elements.
4. Storage tanks, piping, and metallic infrastructure.
5. Automotive repair, chassis parts, trailers, and agricultural machinery.
6. Metal roofs, beams, and exterior constructions.

### Technical Specifications & Typical Values

<b>Binder Type</b>	Alkyd
<b>Colour</b>	Available in <b>White, Black</b> and <b>Grey</b> . (Other colours upon request)
<b>Thinner</b>	White Spirit
<b>Density at 22°C (ISO 2811)</b>	1.12 Kg/L
<b>Solids %w/w</b>	~ 44% *
<b>VOC (2004/42/EC)</b>	482 g/L – (A/i/SB) One-pack performance coatings - VOC compliant
<b>Dry film thickness (2 coats) (ASTM D6132-13(2017))</b>	64 ± 9 µm**

\*depending on the tinting base

\*\*depending on surface absorption, tinting base & application method

# ANTI-CORROSIVE

Triple action anti-corrosion agent for metal surfaces.

## Technical Specifications & Typical Values

<b>Method</b>	Paint brush, roller or spray gun
<b>Coverage per coat</b>	10-12 sqm/L**
<b>Recoatibility</b>	12 h
<b>Shelf life</b>	12-24 months
<b>Touch Dry Time at 22°C</b>	40-60 min
<b>Dry Through Time at 22°C</b>	4-6 h
<b>Ambient air temperature</b>	min. +10°C / max. +40°C
<b>Relative air humidity</b>	55-60 % max.

\*\*Depending on surface absorption, tinting base & application method

# ANTI-CORROSIVE

Triple action anti-corrosion agent for metal surfaces.

## ANTI-CORROSIVE preparation:

---

### Substrate quality & preparation:

1. The substrate must be cured, solid, clean, dry and free of all contaminants such as dust, dirt, oil, grease, surface treatments, etc.
2. Surface defects such as cracks, blow holes, and voids must be fully exposed and repaired.
3. Uneven substrate should be leveled to produce a roughened flat surface.

### ANTI-CORROSIVE preparation:

In the case of spray gun application, dilute by 20% with white spirit.

### Important application remarks:

1. Untreated substrate defects could lead to reflective coating defects and reduced performance.
2. Substrate washing is not allowed before the application of solvent-based coatings.
3. Tool cleaning right after use with white spirit (or soap and water), always following the local HSE rules.

### Packaging:

Metal can of **0.75-L / 2.5-L / 10-L / 17-L**

### Storage:

Shelf life: 12-24 months from the date of production, in original unopened packaging in a cool and dry condition between +5°C and +35°C. Protect from direct sunlight, heat, temperature extremes, and moisture. Failure to comply with the recommended storage conditions may result in premature deterioration of the product packaging and which may cause inconsistent workability, finish and cure times of the material.

### Health, Safety & Environment:

Read the product label carefully before use. The Technical Data Sheet should be read in conjunction with the Safety Data Sheet.

# ANTI-CORROSIVE

Triple action anti-corrosion agent for metal surfaces.

## Paint System

---

Contact Akteon Paints for case-by-case recommendations at: [contact@akteonpaints.com](mailto:contact@akteonpaints.com) or visit [www.akteonpaints.com](http://www.akteonpaints.com)

**Disclaimer:** The information contained in this publication is based on our scientific knowledge, laboratory studies and long-term experience. Therefore, the information provided must be considered indicative and subject to constant review in relation to the circumstances and each practical application. This information is for use by technically skilled persons at their own discretion and risk. The user alone has the responsibility to ensure that existing laws and legislation are observed when using the products.