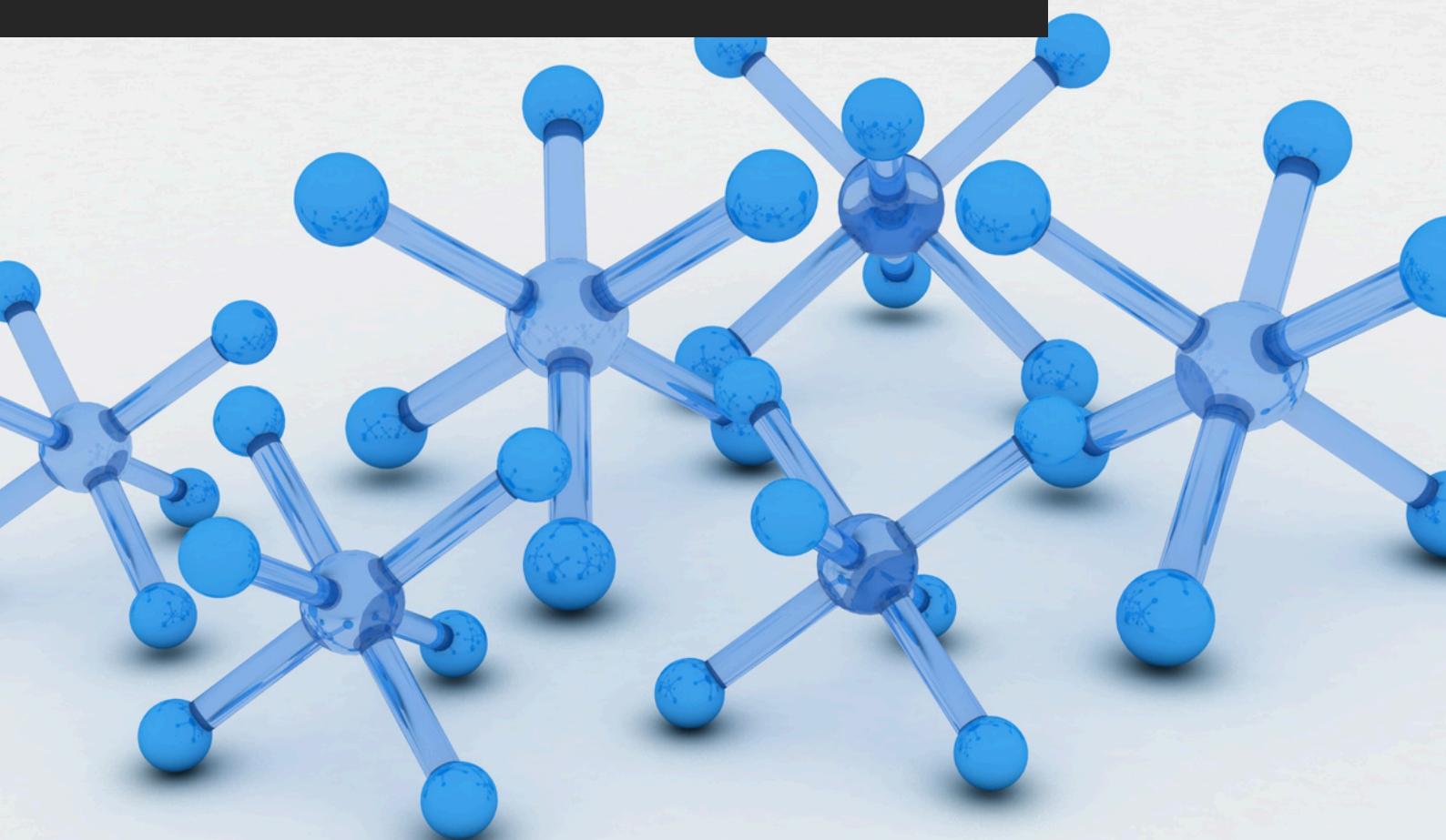


# TDS\_75

## HYDRO TOP COAT

TECHNICAL DATA SHEET  
[akteonpaints.com](http://akteonpaints.com)



Hydro Top Coat\_TDS\_75\_2025\_v1.0\_EN

Visit our website and learn  
more about our products  
[akteonpaints.com](http://akteonpaints.com)

For further information:  
[contact@akteonpaints.com](mailto:contact@akteonpaints.com)

Kifissias Ave. 44,  
Amarousion  
+30 210 440 2727

## TECHNICAL DATA SHEET

# HYDRO TOP COAT

Advanced technology water based enamel paint

### Main Features:

1. Advanced acrylic-enamel technology for superior hardness.
2. Water-based, low odor, and environmentally friendly.
3. High scratch and abrasion resistance.
4. Excellent washability and stain resistance.
5. Non-yellowing formula for long-term colour retention.
6. Fast drying with strong early block resistance.
7. Smooth enamel-like finish with high leveling.
8. Strong adhesion on wood, metal, and walls.
9. Suitable for both interior and exterior use.

### Applications:

1. Wooden doors, frames, and trim.
2. Metal surfaces such as railings, handrails, and furniture.
3. Children's rooms, schools, offices, and high-traffic interiors.
4. Radiators and metal heaters.
5. Furniture, cabinets, cupboards, and shelving.
6. Window sills and high-wear architectural details.
7. Exterior metal gates and decorative ironworks.
8. Retail, commercial, and industrial areas needing durable coatings.

### Technical Specifications & Typical Values

<b>Binder Type</b>	Acrylic
<b>Colour</b>	Available in bases: P, D & TR for tinting in any shade by using color-tinting machines.
<b>Diluent</b>	Water
<b>Density at 22°C (ISO 2811)</b>	1.28 Kg/L
<b>Solids %w/w</b>	~ 55% *
<b>VOC (2004/42/EC)</b>	117 g/L – (A/i/SB) One-pack performance coatings - VOC compliant
<b>Dry film thickness (2 coats) (ASTM D6132-13(2017))</b>	76 µm
<b>Hardness by Instrumented indentation (ISO 14577)</b>	158 MPa

\*depending on the tinting base

\*\*depending on surface absorption, tinting base & application method

# HYDRO TOP COAT

Advanced technology water based enamel paint

## Technical Specifications & Typical Values

<b>Method</b>	Paint brush, roller or spray gun
<b>Coverage per coat</b>	8-10 sqm/L**
<b>Recoatability</b>	6 h
<b>Shelf life</b>	12-24 months
<b>Touch Dry Time at 22°C</b>	30-60 min
<b>Dry Through Time at 22°C</b>	24 h
<b>Ambient air temperature</b>	min. +10°C / max. +40°C
<b>Relative air humidity</b>	20 % min. / 55-60 % max.
<b>Curing time</b>	Note: Times are approximate and will be affected by changing ambient and substrate conditions, particularly temperature and relative humidity.
<b>Fully Polymerized</b>	7 days

\*Depending on the tinting base

\*\*Depending on surface absorption, tinting base & application method

\*\*\*Drying times are temperature, humidity, and film thickness dependent

# HYDRO TOP COAT

Advanced technology water based enamel paint

## HYDRO TOP COAT preparation:

### Substrate quality & preparation:

1. The substrate must be cured, solid, clean, dry and free of all contaminants such as dust, dirt, oil, grease, surface treatments, etc.
2. Surface defects such as cracks, blow holes, and voids must be fully exposed and repaired.
3. Uneven substrate should be leveled to produce a roughened flat surface.

### HYDRO TOP COAT preparation:

While using brush or roller dilute with water by 10% for **first layer** and 10% for **second layer**  
In the case of spray gun application, dilute with water by 20%

### Important application remarks:

1. Untreated substrate defects could lead to reflective coating defects and reduced performance.
2. For tool cleaning right after use water and soap, always following the local HSE rules.

### Packaging:

Metal can of:

**0.75-L**

**2.5-L**

**10-L**

### Storage:

Shelf life: 12-24 months from the date of production, in original unopened packaging in a cool and dry condition between +5°C and +35°C. Protect from direct sunlight, heat, temperature extremes, and moisture. Failure to comply with the recommended storage conditions may result in premature deterioration of the product packaging and which may cause inconsistent workability, finish and cure times of the material.

### Health, Safety & Environment:

Read the product label carefully before use. The Technical Data Sheet should be read in conjunction with the Safety Data Sheet.

TECHNICAL DATA SHEET

# HYDRO TOP COAT

Advanced technology water based enamel paint

## Paint System

---

Contact Akteon Paints for case-by-case recommendations at: [contact@akteonpaints.com](mailto:contact@akteonpaints.com) or visit [www.akteonpaints.com](http://www.akteonpaints.com)

**Disclaimer:** The information contained in this publication is based on our scientific knowledge, laboratory studies and long-term experience. Therefore, the information provided must be considered indicative and subject to constant review in relation to the circumstances and each practical application. This information is for use by technically skilled persons at their own discretion and risk. The user alone has the responsibility to ensure that existing laws and legislation are observed when using the products.