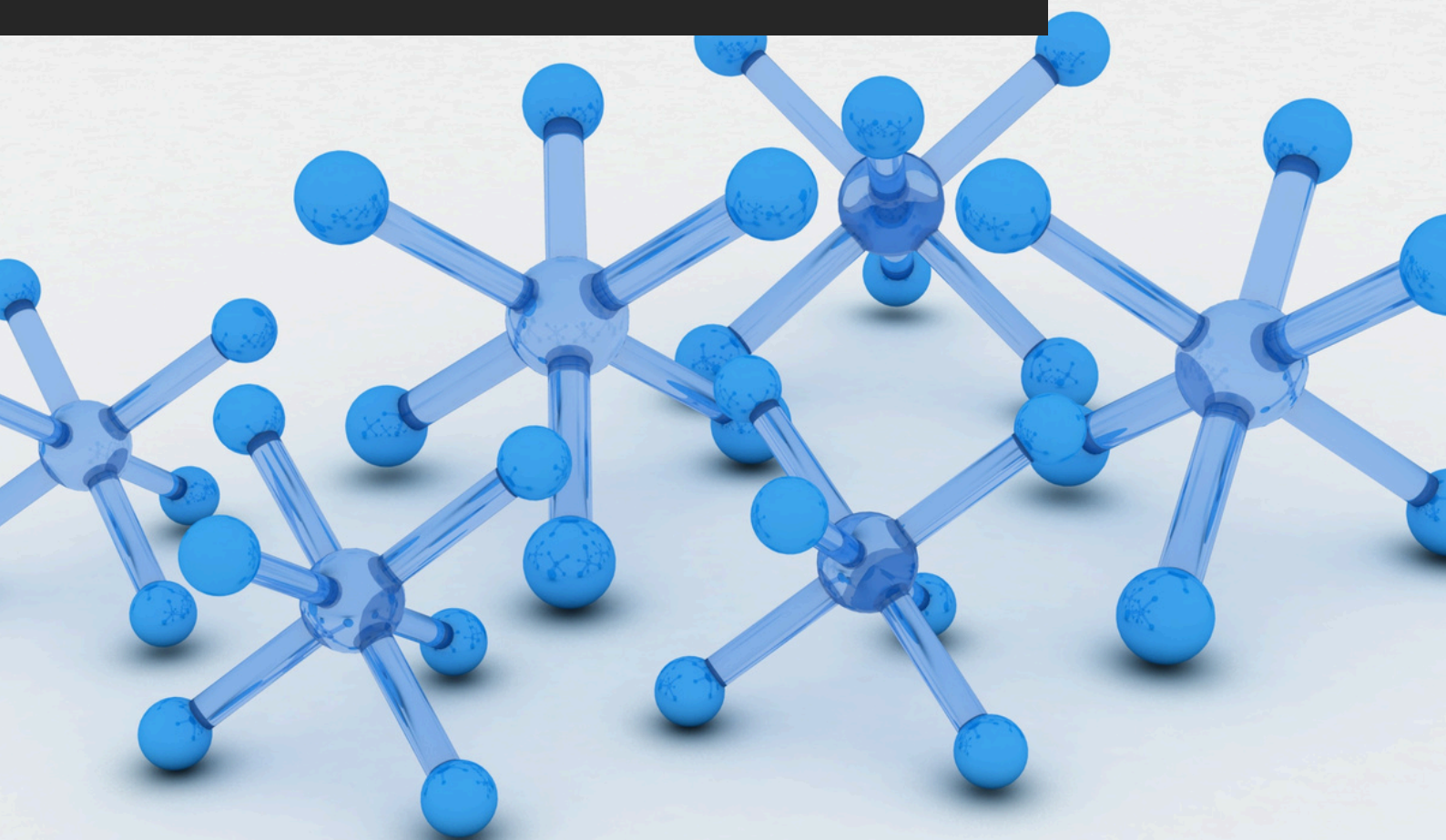


TDS_611

HARD VARNISH

TECHNICAL DATA SHEET
akteonpaints.com



Hard Varnish_TDS_611_2025_v1.0_EN

Visit our website and learn
more about our products
akteonpaints.com

For further information:
contact@akteonpaints.com

Kifissias Ave. 44,
Amarousion
+30 210 440 2727

TECHNICAL DATA SHEET

HARD VARNISH

Polyacrylic resin hard varnish for furniture and flooring

Main Features:

1. Single-component, ready-to-use clear varnish.
2. Polyacrylic resin for high hardness and durability.
3. Excellent scratch and abrasion resistance.
4. Non-yellowing, crystal-clear finish.
5. Strong chemical and stain resistance.
6. Enhances natural wood grain appearance.
7. UV-stable for interior sunlight exposure.
8. Easy application by brush, roller, or spray.

Applications:

1. Wooden flooring (light to medium traffic).
2. Dining tables and coffee tables.
3. Wooden chairs and seating.
4. Bookshelves and cabinets.
5. Wooden countertops.
6. Interior wooden doors.
7. Handrails and banisters.
8. Wooden toys and small craft items.

Technical Specifications & Typical Values

Binder Type	Acrylic
Colour	Available in 24 natural shades and clear (varnish) state.
Diluent	Water
Density at 22°C (ISO 2811)	1.012 Kg/L
Solids %w/w	~ 50% *
VOC (2004/42/EC)	117 g/L – (A/i/SB) One-pack performance coatings - VOC compliant
Dry film thickness (2 coats) (ASTM D6132-13(2017))	70-104 µm
Hardness by Instrumented indentation (ISO 14577)	146 MPa
Chemical resistance (ASTM D1308 – 20)	1h – ultra thick bleach – no deterioration detected

*depending on the tinting base

**depending on surface absorption, tinting base & application method

HARD VARNISH

Polyacrylic resin hard varnish for furniture and flooring

Technical Specifications & Typical Values

Method	Paint brush, roller, or spray gun
Coverage per coat	10-12 sqm/L**
Recoatibility	24 h
Shelf life	12-24 months
Touch Dry Time at 22°C	20-30 min
Dry Through Time at 22°C	24 h
Ambient air temperature	min. +12°C / max. +35°C Expect a considerable decrease in working times when temperature exceeds +35°C. Consider the difference between substrate's temperature and ambient air temperature.
Relative air humidity	20 % min. / 55-60 % max.
Dew point	Substrate's temperature must be at least 6°C above the dew point to reduce the risk of condensation.
Substrate moisture content	< 20 %
Curing time	Note: Times are approximate and will be affected by changing ambient and substrate conditions, particularly temperature and relative humidity.
Foot traffic	~ 24 h ****
Light mechanical loading	5-7 days
Fully serviceable	7-12 days ****

*Depending on the tinting base

**Depending on surface absorption, tinting base & application method

***Drying times are temperature, humidity, and film thickness dependent

****For the purposes of this technical data sheet, "foot traffic" refers exclusively to light foot traffic, meaning stepping or walking without dragging, rolling, or moving heavy objects. This does not include activities that may exert excessive pressure or cause mechanical damage to the coating during its polymerization process of 7-12 days. To prevent potential damage, avoid placing or moving furniture, equipment, or other heavy items on the surface until the coating has fully cured as specified in the curing guidelines.

HARD VARNISH

Polyacrylic resin hard varnish for furniture and flooring

HARD VARNISH preparation:

Substrate quality & preparation:

1. The substrate must be cured, solid, clean, dry, and free of all contaminants such as dust, dirt, oil, grease, surface treatments, etc.
2. Surface defects such as cracks, blow holes, and voids must be fully exposed and repaired.
3. Uneven substrate should be leveled to produce a roughened flat surface.

HARD VARNISH preparation:

In the case of spray gun application, dilute Hydroxyl Lassure with water.

Apply 2 coats of HARD VARNISH with 24h intervals:

- Apply HARD VARNISH diluted with water by 10% for each layer for substrate stabilization through high impregnation.

Important application remarks:

1. Untreated substrate defects could lead to reflective coating defects and reduced performance.
2. The substrate's moisture should be less than 20% to avoid coating adhesion failure and film defects. Higher substrate moisture could result in a lack of coating adhesion and/or blooming.
3. Tool cleaning right after use with water, always following the local HSE rules.

Packaging:

Metal can of **0.75-L / 2.5-L / 10-L**

Storage:

Shelf life: 12-24 months from the date of production, in original unopened packaging in a cool and dry condition between +5°C and +35°C. Protect from direct sunlight, heat, temperature extremes, and moisture. Failure to comply with the recommended storage conditions may result in premature deterioration of the product packaging and which may cause inconsistent workability, finish and cure times of the material.

Health, Safety & Environment:

Read the product label carefully before use. The Technical Data Sheet should be read in conjunction with the Safety Data Sheet.

HARD VARNISH

Polyacrylic resin hard varnish for furniture and flooring

Paint System

Contact Akteon Paints for case-by-case recommendations at: contact@akteonpaints.com or visit www.akteonpaints.com

Disclaimer: The information contained in this publication is based on our scientific knowledge, laboratory studies and long-term experience. Therefore, the information provided must be considered indicative and subject to constant review in relation to the circumstances and each practical application. This information is for use by technically skilled persons at their own discretion and risk. The user alone has the responsibility to ensure that existing laws and legislation are observed when using the products.