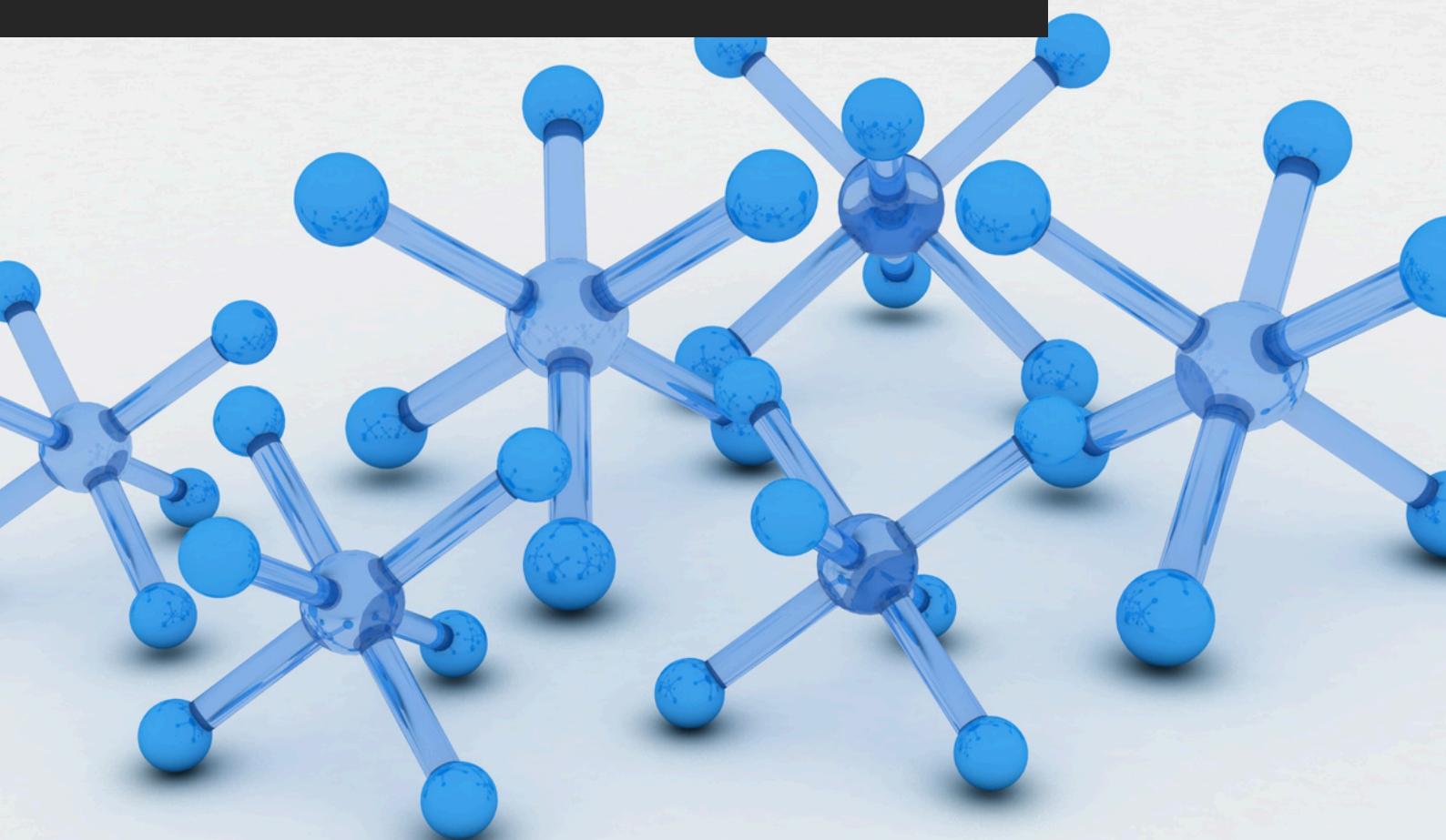


TDS_99

RUST METAL & ANTICORROSIVE

TECHNICAL DATA SHEET
akteonpaints.com



Rust Metal & Anticorrosive_TDS_99_2025_v1.0_EN

Visit our website and learn
more about our products
akteonpaints.com

For further information:
contact@akteonpaints.com

Kifissias Ave. 44,
Amarousion
+30 210 440 2727

RUST METAL & ANTICORROSIVE

Solvent-based laquer with anticorrosive additives

Main Features:

1. Acts as primer, intermediate, and topcoat in one.
2. Solvent-based for strong adhesion and durability.
3. Contains anticorrosive pigments for rust protection.
4. Good surface hardness and mechanical strength.
5. Excellent adhesion to metal substrates.
6. UV and weather resistant.
7. Compatible with brush, roller, or spray application.

Applications:

1. Steel structures and frames.
2. Machinery and equipment.
3. Metal gates and fences.
4. Agricultural tools.
5. Industrial piping.
6. Metal tanks and containers.
7. Marine or coastal metalwork (mild exposure).
8. Protective maintenance coatings.

Technical Specifications & Typical Values

Binder Type	Alkyd Resin
Colour	Available in bases: P, D & TR for tinting in any shade by using color-tinting machines.
Diluent	White Spirit
Density at 22°C (ISO 2811)	1.21 Kg/L
Solids %w/w	~ 65% *
VOC (2004/42/EC)	482 g/L – (A/i/SB) One-pack performance coatings - VOC compliant
Dry film thickness (2 coats) (ASTM D6132-13(2017))	92 µm

*depending on the tinting base

**depending on surface absorption, tinting base & application method

RUST METAL & ANTICORROSIVE

Solvent-based laquer with anticorrosive additives

Technical Specifications & Typical Values

Method	Paint brush, roller, or spray gun
Coverage per coat	10-12 sqm/L**
Recoatibility	24 h
Shelf life	12-24 months
Touch Dry Time at 22°C	4-6 h
Dry Through Time at 22°C	36-48 h
Ambient air temperature	min. +10°C / max. +40°C Expect considerable decrease in working times when temperature exceeds +35°C. Consider the difference between substrate's temperature and ambient air temperature.
Relative air humidity	20 % min. / 60-70 % max.
Dew point	Substrate's temperature must be at least 8°C above the dew point to reduce the risk of condensation.
Substrate moisture content	< 8 %
Curing time	Note: Times are approximate and will be affected by changing ambient and substrate conditions, particularly temperature and relative humidity.

*Depending on the tinting base

**Depending on surface absorption, tinting base & application method

***Drying times are temperature, humidity, and film thickness dependent

RUST METAL & ANTICORROSIVE

Solvent-based laquer with anticorrosive additives

RUST METAL & ANTICORROSIVE preparation:

Substrate quality & preparation:

1. The substrate must be cured, solid, clean, dry and free of all contaminants such as dust, dirt, oil, grease, surface treatments, etc.
2. Surface defects such as cracks, blow holes, and voids must be fully exposed and repaired.
3. Uneven substrate should be leveled to produce a roughened flat surface.
- 4.

RUST METAL & ANTICORROSIVE preparation:

In the case of spray gun application, dilute with 20% white spirit.

Apply 2 layers with 24h intervals:

- Apply the first layer diluted with 10 % WS Thinner.
- After 24h apply the second layer diluted with 10% WS thinner.

Important application remarks:

1. Untreated substrate defects could lead to reflective coating defects and reduced performance.
2. Substrate washing is not allowed before the application of solvent-based coatings.
3. The substrate's moisture should be less than 8% to avoid coating adhesion failure and film defects. Higher substrate moisture could result in a lack of coating adhesion and/or blooming.
4. Tool cleaning right after use with white spirit and soap, always following the local HSE rules.

Packaging:

Metal can of **0.75-L / 2.5-L / 10-L**

Storage:

Shelf life: 12-24 months from the date of production, in original unopened packaging in a cool and dry condition between +5°C and +35°C. Protect from direct sunlight, heat, temperature extremes, and moisture. Failure to comply with the recommended storage conditions may result in premature deterioration of the product packaging and which may cause inconsistent workability, finish and cure times of the material.

Health, Safety & Environment:

Read the product label carefully before use. The Technical Data Sheet should be read in conjunction with the Safety Data Sheet.

TECHNICAL DATA SHEET

RUST METAL & ANTICORROSIVE

Solvent-based laquer with anticorrosive additives

Paint System

Contact Akteon Paints for case-by-case recommendations at: contact@akteonpaints.com or visit www.akteonpaints.com

Disclaimer: The information contained in this publication is based on our scientific knowledge, laboratory studies and long-term experience. Therefore, the information provided must be considered indicative and subject to constant review in relation to the circumstances and each practical application. This information is for use by technically skilled persons at their own discretion and risk. The user alone has the responsibility to ensure that existing laws and legislation are observed when using the products.