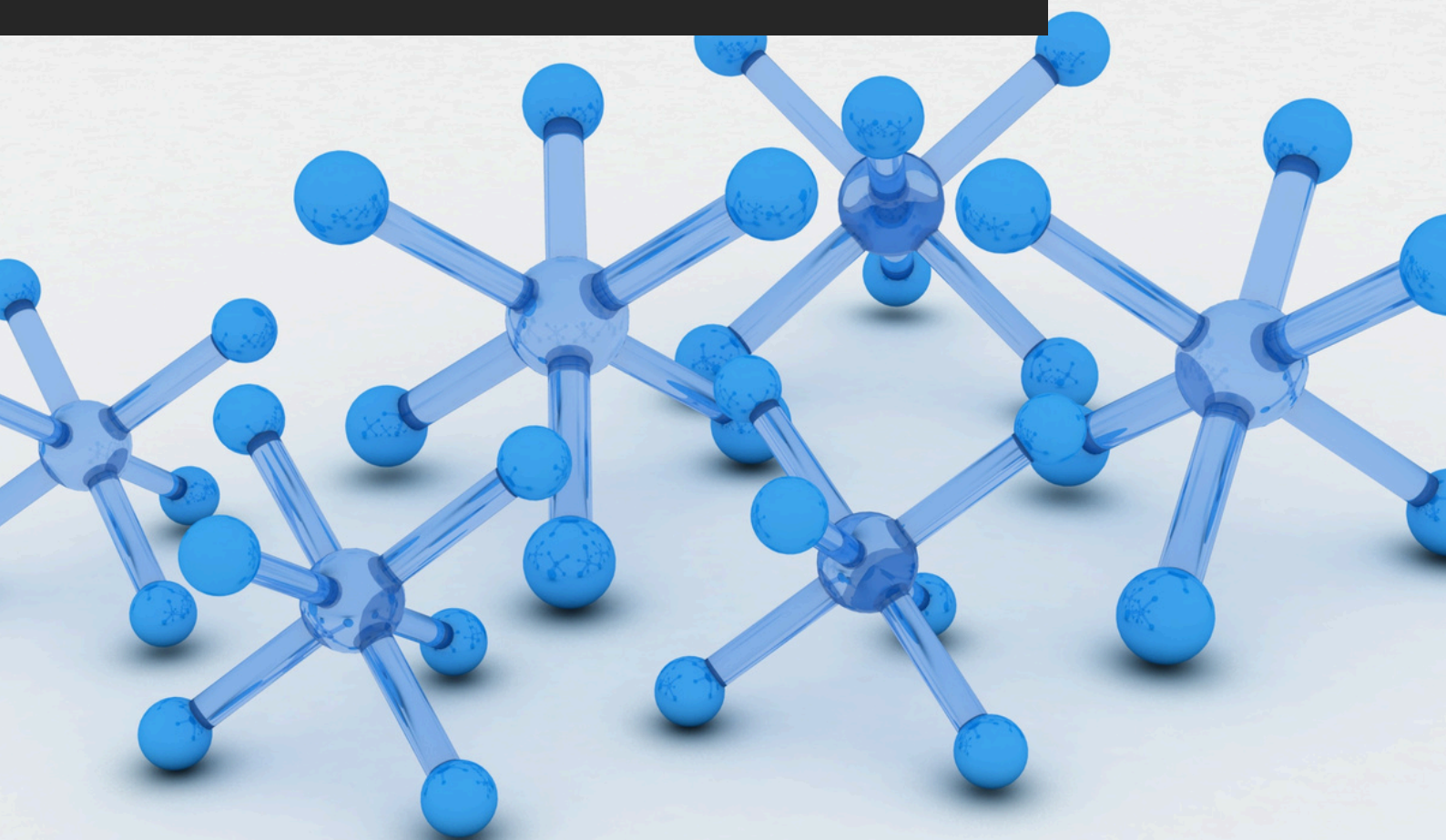


# TDS\_RES

## RESIN LIQUID GLASS

TECHNICAL DATA SHEET  
[akteonpaints.com](http://akteonpaints.com)



Resin Liquid Glass\_TDS\_RES\_2025\_v1.0\_EN

Visit our website and learn  
more about our products  
[akteonpaints.com](http://akteonpaints.com)

For further information:  
[contact@akteonpaints.com](mailto:contact@akteonpaints.com)

Kifissias Ave. 44,  
Amarousion  
+30 210 440 2727

## TECHNICAL DATA SHEET

# RESIN LIQUID GLASS

Single component, solvent-based, pure acrylic sealant resin

### Main Features:

1. Ready-to-use, single-component resin.
2. Solvent-based for deep penetration and quick drying.
3. Pure acrylic formulation with high flexibility.
4. Excellent crack-bridging capability.
5. Strong adhesion to cementitious and masonry substrates.
6. UV- and weather-resistant for exterior use.
7. Easy to apply with a brush, spatula, or cartridge.

### Applications:

1. Filling hairline cracks in concrete walls.
2. Crack sealing in boundary walls.
3. Treatment of facade cracks before painting.
4. Preventing water seepage.
5. Maintenance of aged concrete structures.
6. Surface preparation for waterproofing systems.

### Technical Specifications & Typical Values

<b>Binder Type</b>	Acrylic
<b>Colour</b>	Available clear resin state.
<b>Diluent</b>	Nitro Thinner
<b>Density at 22°C (ISO 2811)</b>	0.98 - 1.02 Kg/L
<b>Solids %w/w</b>	~ 55% *
<b>VOC (2004/42/EC)</b>	500 g/L – (A/i/SB) One-pack performance coatings - VOC compliant
<b>Dry film thickness (2 coats) (ASTM D6132-13(2017))</b>	243 µm
<b>Chemical resistance (ASTM D1308 – 20)</b>	1h – ultra thick bleach – no deterioration detected

\*depending on the tinting base

\*\*depending on surface absorption, tinting base & application method

## TECHNICAL DATA SHEET

# RESIN LIQUID GLASS

Single component, solvent-based, pure acrylic sealant resin

### Technical Specifications & Typical Values

<b>Method</b>	Paint brush, roller, or spatula
<b>Coverage per coat</b>	4-5 sqm/L**
<b>Recoatability</b>	24 h
<b>Shelf life</b>	12-24 months
<b>Touch Dry Time at 22°C</b>	1 h
<b>Dry Through Time at 22°C</b>	24 h
<b>Ambient air temperature</b>	min. +10°C / max. +40°C Expect considerable decrease in working times when temperature exceeds +35°C. (Might need to use extra nitro thinner) Consider the difference between substrate's temperature and ambient air temperature.
<b>Relative air humidity</b>	20 % min. / 55-60 % max.
<b>Dew point</b>	Substrate's temperature must be at least 3°C above the dew point to reduce the risk of condensation.
<b>Substrate moisture content</b>	< 8 % pbw - Oven-dry-method. <b>No rising moisture - Polyethylene-sheet method ASTM D 4263</b>
<b>Curing time</b>	Note: Times are approximate and will be affected by changing ambient and substrate conditions, particularly temperature and relative humidity.
<b>Foot traffic</b>	24 h ****
<b>Light mechanical loading</b>	5-7 days
<b>Fully serviceable</b>	7-12 days ****

\*Depending on the tinting base

\*\*Depending on surface absorption, tinting base & application method

\*\*\*Drying times are temperature, humidity, and film thickness dependent

\*\*\*\*For the purposes of this technical data sheet, "foot traffic" refers exclusively to light foot traffic, meaning stepping or walking without dragging, rolling, or moving heavy objects. This does not include activities that may exert excessive pressure or cause mechanical damage to the coating during its polymerization process of 7-12 days. To prevent potential damage, avoid placing or moving furniture, equipment, or other heavy items on the surface until the coating has fully cured as specified in the curing guidelines.

# RESIN LIQUID GLASS

Single component, solvent-based, pure acrylic sealant resin

## RESIN LIQUID GLASS preparation:

### Substrate quality & preparation:

1. The substrate must be cured, solid, clean, dry and free of all contaminants such as dust, dirt, oil, grease, surface treatments, etc.
2. Cementitious substrates must be at least 4 weeks old in 22°C.

## RESIN LIQUID GLASS preparation:

Dilution with 5% nitro thinner if needed.

### Apply 2 coats of Resin Liquid Glass with 24h intervals:

- If needed, apply Resin Liquid Glass with 5 % nitro thinner for substrate stabilization through high impregnation depth and surface crystallization effect.

After 24h, apply a second coat of Resin Liquid Glass.

### Important application remarks:

1. Untreated substrate defects could lead to reflective coating defects and reduced performance.
2. Substrate washing is not allowed before the application of solvent-based coatings.
3. The substrate's moisture should be less than 8% to avoid coating adhesion failure and film defects. To assure suitable substrate moisture, the ambient temperature must be 22°C for at least 12 days. Higher substrate moisture could result in a lack of coating adhesion and/or blooming.
4. Tool cleaning right after use with nitro thinner, always following the local HSE rules.

### Packaging:

Metal can of **0.375 / 0.75-L / 2.5-L / 10-L**

### Storage:

Shelf life: 12-24 months from the date of production, in original unopened packaging in a cool and dry condition between +5°C and +35°C. Protect from direct sunlight, heat, temperature extremes, and moisture. Failure to comply with the recommended storage conditions may result in premature deterioration of the product packaging and which may cause inconsistent workability, finish and cure times of the material.

### Health, Safety & Environment:

Read the product label carefully before use. The Technical Data Sheet should be read in conjunction with the Safety Data Sheet.

# RESIN LIQUID GLASS

Single component, solvent-based, pure acrylic sealant resin

## Paint System

---

Contact Akteon Paints for case-by-case recommendations at: [contact@akteonpaints.com](mailto:contact@akteonpaints.com) or visit [www.akteonpaints.com](http://www.akteonpaints.com)

**Disclaimer:** The information contained in this publication is based on our scientific knowledge, laboratory studies and long-term experience. Therefore, the information provided must be considered indicative and subject to constant review in relation to the circumstances and each practical application. This information is for use by technically skilled persons at their own discretion and risk. The user alone has the responsibility to ensure that existing laws and legislation are observed when using the products.