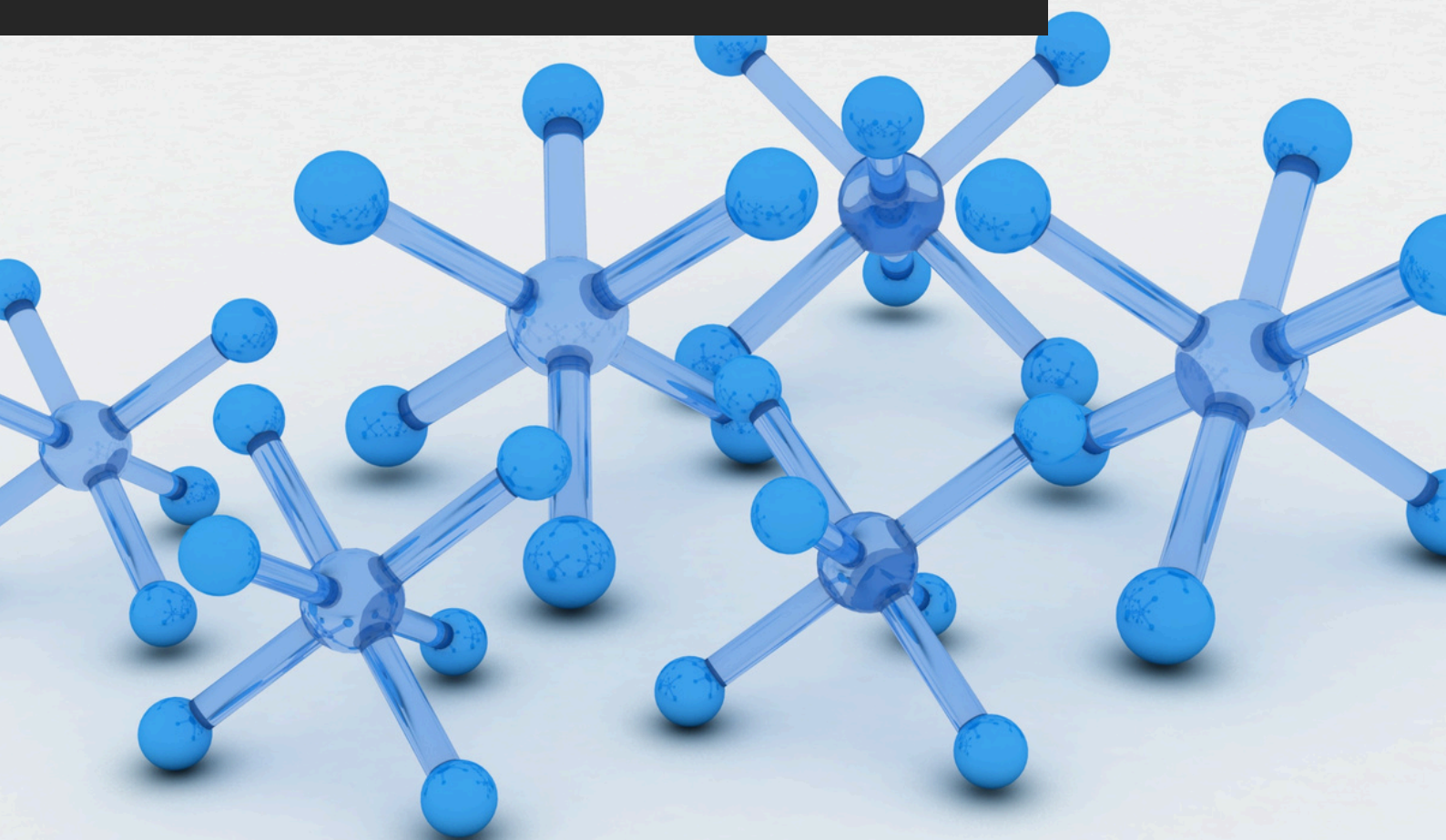


TDS_035

ACR/300X

Technical Data Sheet
akteonpaints.com



ACR/300X_TDS_035_2025_v1.0_EN

Visit our website and learn
more about our products
akteonpaints.com

For further information:
contact@akteonpaints.com

Kifissias Ave. 44,
Amarousion
+30 210 440 2727

TECHNICAL DATA SHEET

ACR/300X

Pigment concentrate designed for wood impregnation by immersion.

Main Features:

1. Water-based formulation optimized for immersion and timber-dip systems.
2. Low viscosity for fast, deep penetration into wood fibers.
3. Highly stable pigment dispersion with no settling during continuous circulation.
4. Provides uniform, streak-free coloration on all wood species.
5. Designed for short immersion cycles and fast drainage.

Applications:

1. Construction timber impregnation using industrial dip tanks and immersion lines.
2. Industrial wood processing for pre-coloring beams, boards, and profiles.
3. Mass timber production treating cladding, shutters, and structural elements via immersion systems.

Technical Specifications & Typical Values

Binder Type	Acrylic
Colour	Available in Green or Brown .
Diluent	Water
Density at 22°C (ISO 2811)	1.20 Kg/L
Solids %w/w	55%

Technical Specifications & Typical Values

Method	Timber impregnation using industrial dip tanks and immersion lines
---------------	--

TECHNICAL DATA SHEET

ACR/300X

Pigment concentrate designed for wood impregnation by immersion.

ACR/300X preparation:

The acrylic wood-impregnation pigment **ACR/300X** is a mixture of colourants used in timber impregnation using industrial dip tanks, giving the wood the characteristic brown/green tint commonly seen in exterior-grade impregnated timber (such as posts, structural wood, fencing, etc.).

The product contains specially selected, highly durable brown/green pigments dispersed in water, which penetrate deeply into the wood during the impregnation process (in autoclave or open-tank systems), without forming a film or altering the natural texture of the wood.

Packaging:

Plastic can: **11-L**

IBC Tank: **1000-L**

Storage:

Shelf life: 12-24 months from the date of production, in original unopened packaging in a cool and dry condition between +5°C and +35°C. Protect from direct sunlight, heat, temperature extremes, and moisture. Failure to comply with the recommended storage conditions may result in premature deterioration of the product packaging and which may cause inconsistent workability, finish and cure times of the material.

Health, Safety & Environment:

Read the product label carefully before use. The Technical Data Sheet should be read in conjunction with the Safety Data Sheet.

TECHNICAL DATA SHEET

ACR/300X

Pigment concentrate designed for wood impregnation by immersion.

Paint System

Contact Akteon Paints for case-by-case recommendations at: contact@akteonpaints.com or visit www.akteonpaints.com

Disclaimer: The information contained in this publication is based on our scientific knowledge, laboratory studies and long-term experience. Therefore, the information provided must be considered indicative and subject to constant review in relation to the circumstances and each practical application. This information is for use by technically skilled persons at their own discretion and risk. The user alone has the responsibility to ensure that existing laws and legislation are observed when using the products.