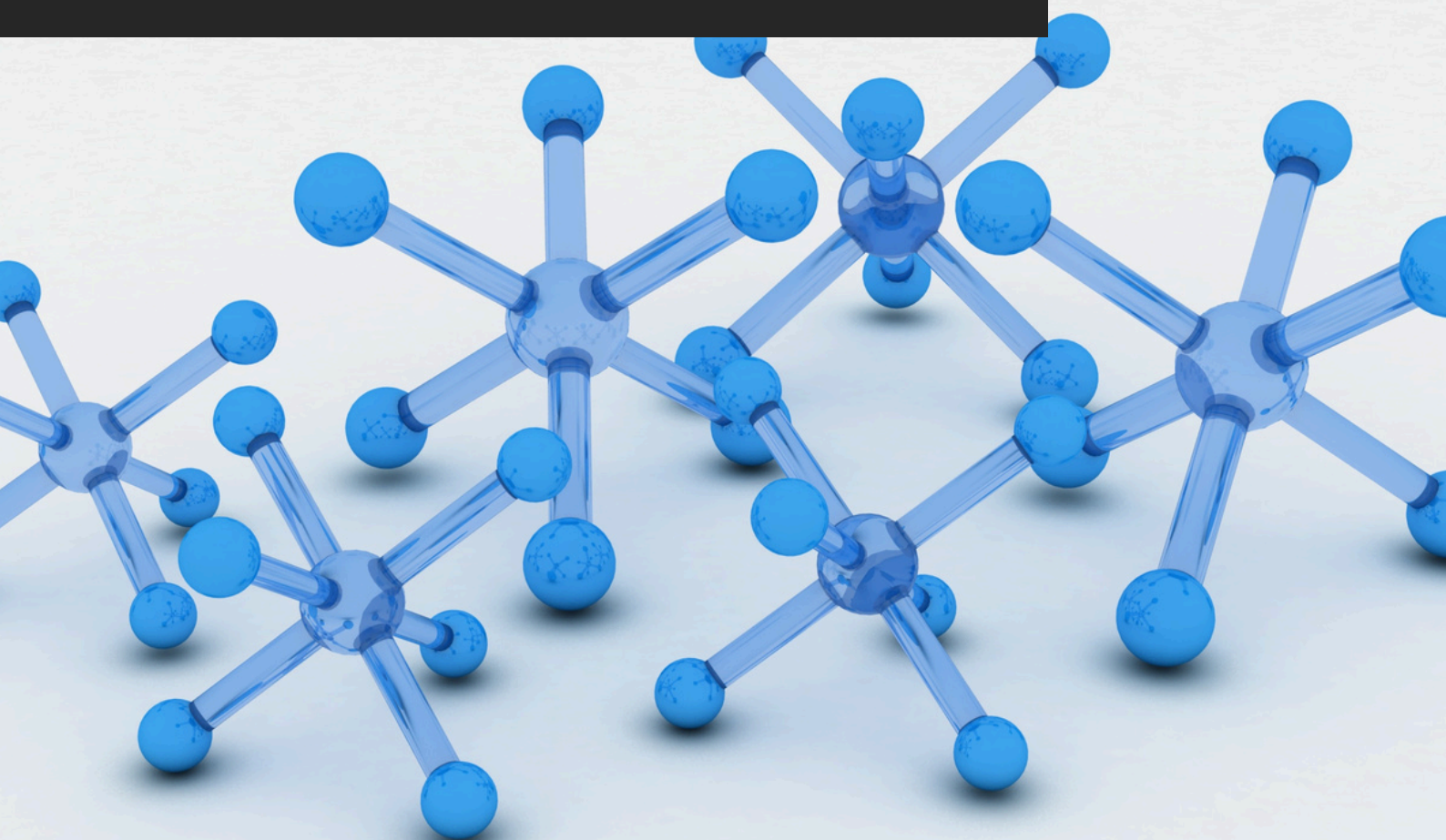


# TDS\_76

## FLOORFINISH PU-HYBRID

TECHNICAL DATA SHEET  
[akteonpaints.com](http://akteonpaints.com)



Floorfinish\_PU\_TDS\_76\_2026\_v1.0\_EN

Visit our website and learn  
more about our products  
[akteonpaints.com](http://akteonpaints.com)

For further information:  
[contact@akteonpaints.com](mailto:contact@akteonpaints.com)

Kifissias Ave. 44,  
Amarousion  
+30 210 440 2727

# FLOORFINISH PU-HYBRID

Water-based PU Hybrid varnish for wooden floors.

**Main Features:**

1. Single-component, ready-to-use clear varnish.
2. Hybrid system for high hardness and durability.
3. Excellent scratch and abrasion resistance.
4. Non-yellowing, crystal-clear finish.
5. Strong chemical and stain resistance.
6. Enhances natural wood grain appearance.
7. UV-stable for interior sunlight exposure.
8. Easy application by brush, roller, or spray.

**Main Applications:**

1. **Wooden flooring.**

**Can also be used in:**

1. Dining tables and coffee tables.
2. Wooden chairs and seating.
3. Bookshelves and cabinets.
4. Wooden countertops.
5. Interior wooden doors.

**Technical Specifications & Typical Values**

<b>Binder Type</b>	<b>Hybrid:</b> Polyurethane (PU) - Acrylic
<b>Colour</b>	Available in 24 natural shades and clear (varnish) state.
<b>Diluent</b>	Water
<b>Density at 22°C (ISO 2811)</b>	1.012 Kg/L
<b>Solids %w/w</b>	~ 53 % *
<b>VOC (2004/42/EC)</b>	114 g/L – (A/i/SB) One-pack performance coatings - VOC compliant
<b>Dry film thickness (2 coats) (ASTM D6132-13(2017))</b>	95-121 µm
<b>Hardness by Instrumented indentation (ISO 14577)</b>	142 MPa
<b>Chemical resistance (ASTM D1308 – 20)</b>	1h – ultra thick bleach – no deterioration detected

\*depending on the tinting base

\*\*depending on surface absorption, tinting base & application method

# FLOORFINISH PU-HYBRID

Water-based PU Hybrid varnish for wooden floors.

## Technical Specifications & Typical Values

<b>Method</b>	Paint brush, roller, or spray gun
<b>Coverage per coat</b>	10-12 sqm/L**
<b>Recoatibility</b>	24 h
<b>Shelf life</b>	12-24 months
<b>Touch Dry Time at 22°C</b>	20-30 min
<b>Dry Through Time at 22°C</b>	24 h
<b>Ambient air temperature</b>	min. +12°C / max. +35°C Expect a considerable decrease in working times when temperature exceeds +35°C. Consider the difference between substrate's temperature and ambient air temperature.
<b>Relative air humidity</b>	20 % min. / 55-60 % max.
<b>Dew point</b>	Substrate's temperature must be at least 6°C above the dew point to reduce the risk of condensation.
<b>Substrate moisture content</b>	< 20 %
<b>Curing time</b>	Note: Times are approximate and will be affected by changing ambient and substrate conditions, particularly temperature and relative humidity.
<b>Foot traffic</b>	~ 24 h ****
<b>Light mechanical loading</b>	5-7 days
<b>Fully serviceable</b>	7-12 days ****

\*Depending on the tinting base

\*\*Depending on surface absorption, tinting base & application method

\*\*\*Drying times are temperature, humidity, and film thickness dependent

\*\*\*\*For the purposes of this technical data sheet, "foot traffic" refers exclusively to light foot traffic, meaning stepping or walking without dragging, rolling, or moving heavy objects. This does not include activities that may exert excessive pressure or cause mechanical damage to the coating during its polymerization process of 7-12 days. To prevent potential damage, avoid placing or moving furniture, equipment, or other heavy items on the surface until the coating has fully cured as specified in the curing guidelines.

# FLOORFINISH PU-HYBRID

Water-based PU Hybrid varnish for wooden floors.

## Floorfinish PU preparation:

---

### Substrate quality & preparation:

1. The substrate must be cured, solid, clean, dry, and free of all contaminants such as dust, dirt, oil, grease, surface treatments, etc.
2. Surface defects such as cracks, blow holes, and voids must be fully exposed and repaired.
3. Uneven substrate should be leveled to produce a roughened flat surface.

### Apply 2 coats of Floorfinish PU with 24h intervals:

- Apply diluted with water by 10% for each layer.

### Important application remarks:

1. Untreated substrate defects could lead to reflective coating defects and reduced performance.
2. The substrate's moisture should be less than 20% to avoid coating adhesion failure and film defects. Higher substrate moisture could result in a lack of coating adhesion and/or blooming.
3. Tool cleaning right after use with water, always following the local HSE rules.

### Packaging:

Metal can of **0.75-L / 2.5-L / 10-L**

### Storage:

Shelf life: 12-24 months from the date of production, in original unopened packaging in a cool and dry condition between +5°C and +35°C. Protect from direct sunlight, heat, temperature extremes, and moisture. Failure to comply with the recommended storage conditions may result in premature deterioration of the product packaging and which may cause inconsistent workability, finish and cure times of the material.

### Health, Safety & Environment:

Read the product label carefully before use. The Technical Data Sheet should be read in conjunction with the Safety Data Sheet.

# FLOORFINISH PU-HYBRID

Water-based PU Hybrid varnish for wooden floors.

## Paint System

---

Contact Akteon Paints for case-by-case recommendations at: [contact@akteonpaints.com](mailto:contact@akteonpaints.com) or visit [www.akteonpaints.com](http://www.akteonpaints.com)

**Disclaimer:** The information contained in this publication is based on our scientific knowledge, laboratory studies and long-term experience. Therefore, the information provided must be considered indicative and subject to constant review in relation to the circumstances and each practical application. This information is for use by technically skilled persons at their own discretion and risk. The user alone has the responsibility to ensure that existing laws and legislation are observed when using the products.